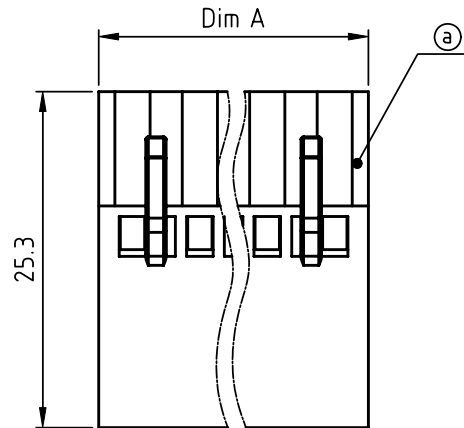
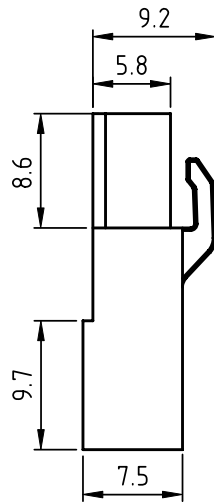
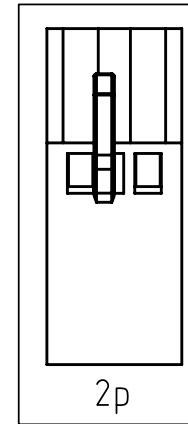
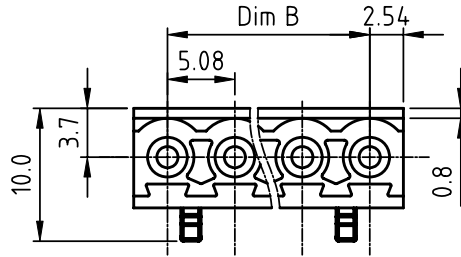


PRODUCT NUMBER	PITCH
Klxx50x000JOG	5.08 mm



Material:

- Item@Terminal housing:Thermoplastic (UL94 V-0)

Electrical cULus

- Voltage rating: 300V
- Current rating: 10A
- Wire range: 0.5-1.0mm²/1.5-2.5mm²
- Withstanding Voltage: 1.6KV
- Corresponding female crimp contacts:A0 5.08 series

PART NO.: **Kl xx 50 x 0 00J0 G**

N = Number of poles
Dim A=Nx5.08
Dim B=(N-1)x5.08

Poles	Dim A	Dim B
2-6p	±0.20	±0.20
7-12p	±0.25	±0.25
13-16p	±0.30	±0.30
17-24p	±0.40	±0.35

Solid block	No. of poles	Color	RoHS compliant
0	2	Black (RAL9005)	(lead<4%)
02	3	Red (RAL3001/D)	In copper Alloy
03	4	Orange(RAL2011/P)	
...	...	Yellow(RAL1018/A)	
24	5	Green(RAL6018/T)	
	6	Blue (RAL5015/A)	
	8	Grey(RAL7035/D)	
	9	White(RAL1102)	
	C	Green(RAL6018/U)	

mat'l. code		surface ASME Y14.5	tolerance ASME Y14.5	projection	product family TERMINAL BLOCK
ltr	ecn no	dr	date	tolerances unless otherwise specified	title
				angles X±0.5	TERMINAL BLOCK
				MM	PLUGGABLE PLUG,CRIMP CONNECTION
				X*±1"	scale
				dr EVIN ZHONG 050414	FCI
				enr EVIN ZHONG 050414	dwg no sheet 1 of 1 size
				chr HANKE FENG 050414	Klxx50x000JOG A4
				appd SHI JUN 050414	type CUSTOMER Drawing
sheet index	revision sheet	A	1		