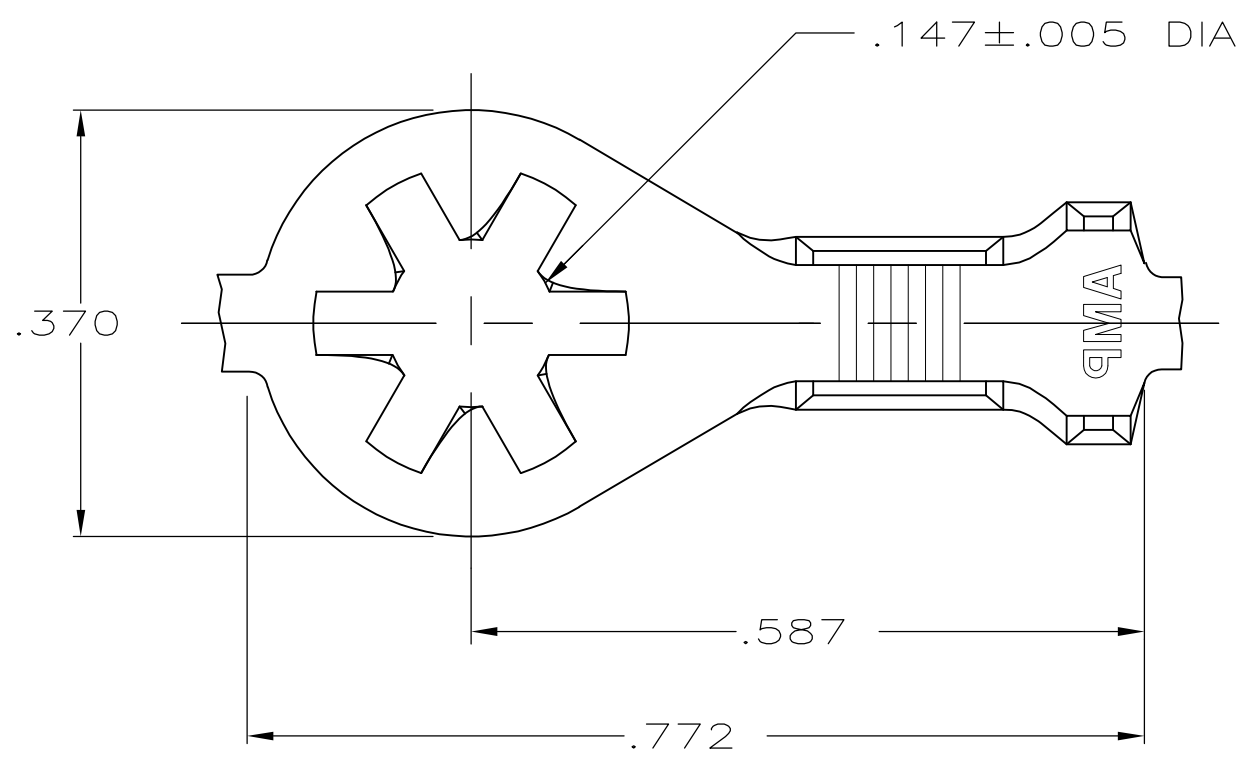
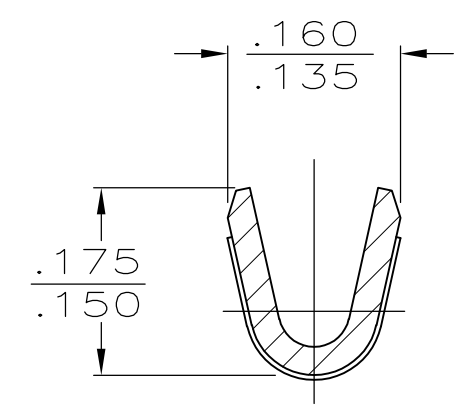


THIS DRAWING IS UNPUBLISHED. RELEASED FOR PUBLICATION
 © COPYRIGHT - By - ALL RIGHTS RESERVED.

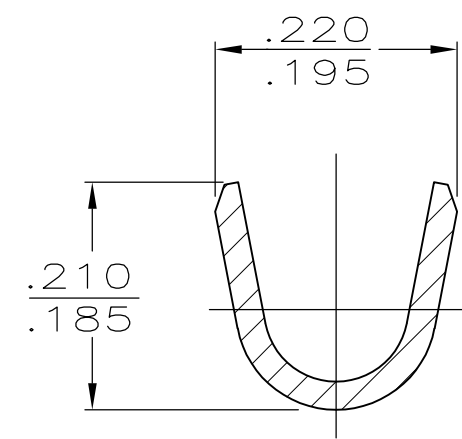
LOC	DIST	REVISIONS					
AF	50	P	LTR	DESCRIPTION	DATE	DWN	APVD
			K1	REVISED PER ECO-11-004917	11MAR11	RK	HMR



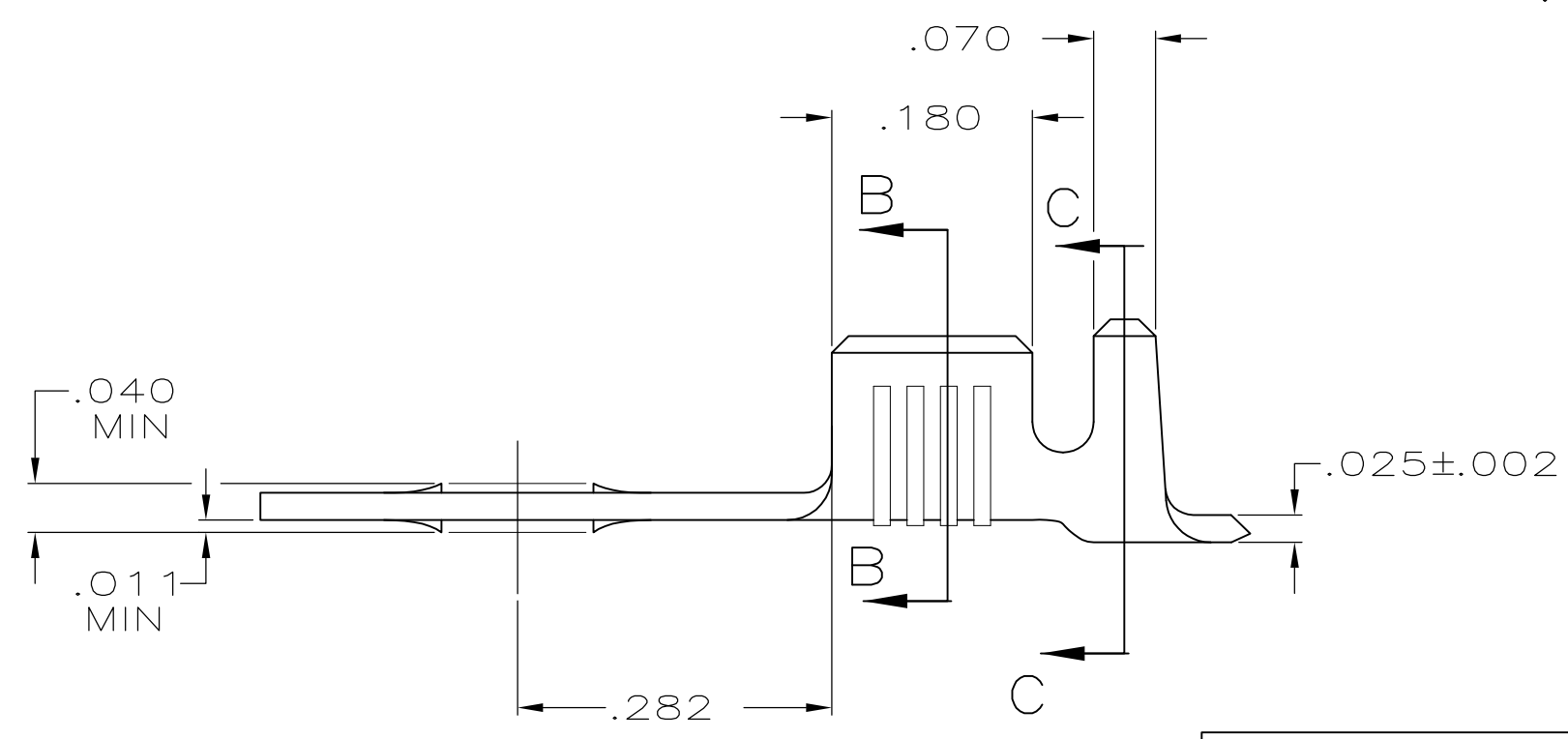
- 1 CONTINUOUS STRIP ON REELS
- 2 .000080 MIN TIN PLATE
- 3 .000150 MIN TIN PLATE
- 4 PRELIMINARY - NOT FOR PRODUCTION



SECTION B-B



SECTION C-C



3	.105-.145	18-14	4	61793-4
NICKEL PL	.105-.145	18-14	4	61793-2
2	.105-.145	18-14		61793-1
FINISH	INSULATION RANGE	WIRE SIZE	PART NO	

THIS DRAWING IS A CONTROLLED DOCUMENT.

DIMENSIONS: INCHES	TOLERANCES UNLESS OTHERWISE SPECIFIED:
	0 PLC ± -
	1 PLC ± -
	2 PLC ± -
	3 PLC ± .015
	4 PLC ± -
	ANGLES ± -
MATERIAL T2 STEEL	FINISH SEE TABLE

DWN D HOLLINGSWORTH 5/15/87	NAME STE TE Connectivity	
CHK G YETTER 11/23/87		
APVD RP FRANTZ 12/2/87		
PRODUCT SPEC -		
APPLICATION SPEC -	SIZE A3	
WEIGHT -	CAGE CODE 00779	
CUSTOMER DRAWING		DRAWING NO C-61793
		RESTRICTED TO -

SCALE 6:1		SHEET 1 OF 1		REV K1	
--------------	--	-----------------	--	-----------	--