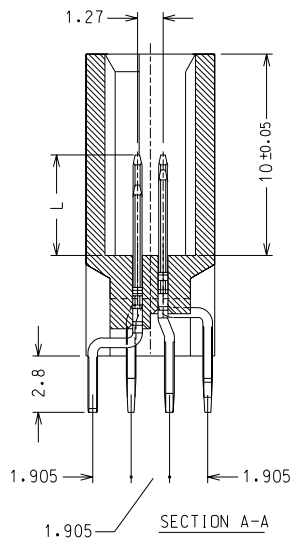
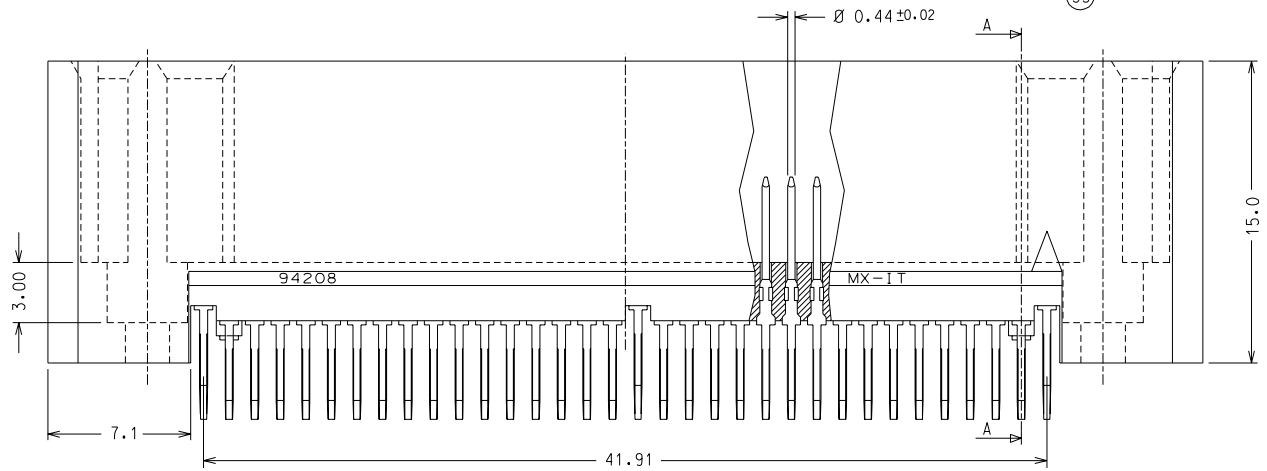
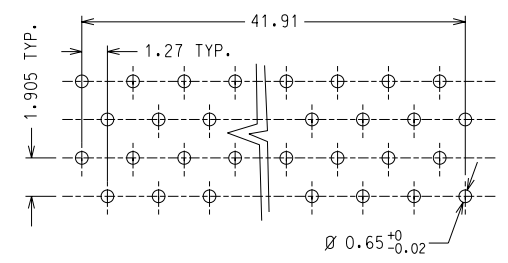
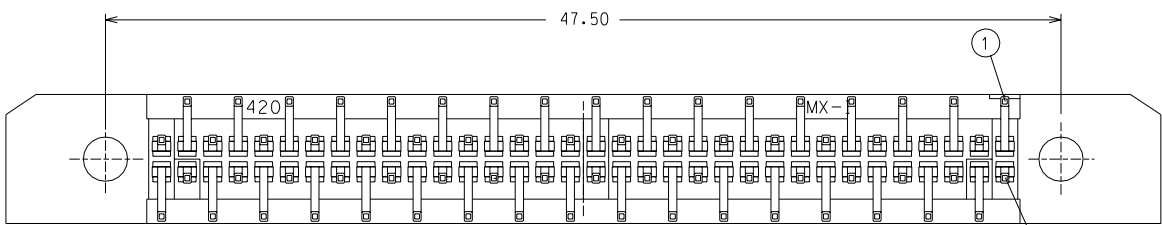
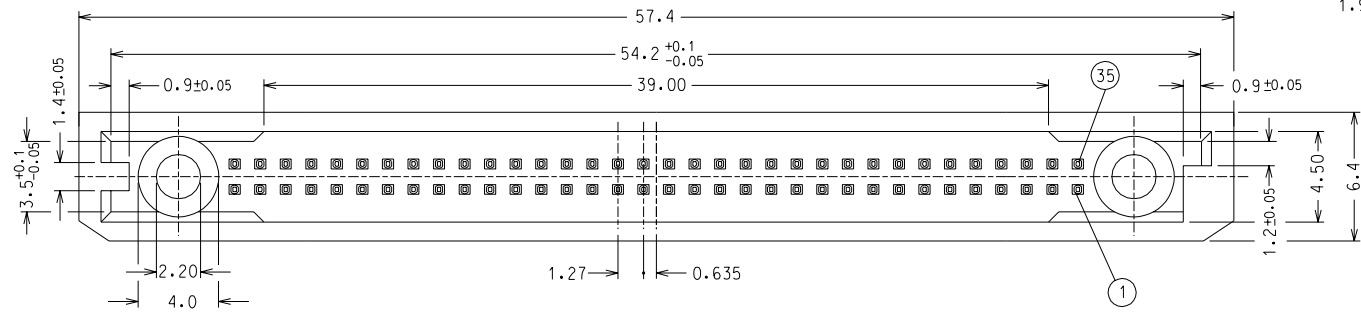


8 7 6 5 4 3 2 1



| PIN NUMBER | LENGTH L ± 0.1 |
|------------------|----------------|
| 36,67 | 3.5 |
| ALL OTHER PINS | 4.25 |
| 1,17,34,35,51,68 | 5.0 |



MATERIAL:
 HOUSING: PA 46 30% G.F. UL94 V-0
 CONTACT: PHOSPHOR BRONZE
 PLATING: 0.13 µ min. Au over 1 µ min. Pd Ni alloy over 1.27 µ min. Ni
 Solder area: Sn 3.75 µ min. over 1.27 µ Ni min.

F
E
D
C
B
A

F
E
D
C
B
A

8 7

ECN Z2004-0231 06-05-04
 Mod. materiale G.F.
 ECN Z2004-0069 26-11-03
 Mod. descr. finitura G.F.

| DIMENSIONS SHOWN (METRIC) INCH | |
|---|----------|
| UNLESS OTHERWISE SPECIFIED TOLERANCES ANGULAR ± / | |
| INCH | (METRIC) |
| 3 PLACE ± | |
| 2 PLACE ± | ± 0.1 |
| 1 PLACE | ± 0.2 |

DRWG BY
Gottardo
 CHK'D BY
 APP'D BY
Previato
 SCALE
4:1

| REVISE ONLY ON CAD SYSTEM | | SH. | REV. |
|--|--|--------------------------------|------|
| CAD/CAM FILENAME 9420800S | THIS DRAWING CONTAINS INFORMATION THAT IS PROPRIETARY TO MOLEX INC AND SHOULD NOT BE USED WITHOUT WRITTEN PERMISSION | | |
| TITLE MEMORY CARD CONNECTOR 68 CKT DUAL ROW - STRAIGHT HEADER ACCORDING TO JEIDA VER. 4 | | | |
| MOLEX MOLEX INCORPORATED | | SHEET NO. DATE 1/1 10-09-91 | |
| PART NO. 94208-0011 | DWG NO. SD-94208-001 | SIZE B | |

DESIGN DIMENSION (PRIMARY) (MM) (IN)
 EQUIVALENT DIMENSION (SECONDARY) (MM) (IN)

LTR

A2
A1