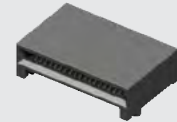
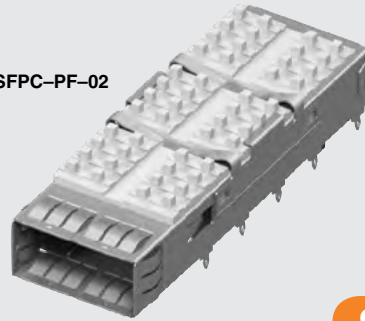


QSFP8-PF-02



QSFP8-038-01-L-D-RA1

(0.80 mm) .0315"

QSFP8, QSFP8, QSFP8 SERIES

# QSFP CONNECTOR & CAGE

Mates with:  
QSFP8

## SPECIFICATIONS

For complete specifications and recommended PCB layouts see [www.samtec.com?QSFP8](http://www.samtec.com?QSFP8)

**Insulator Material:**  
LCP

**Contact Material:**  
Phosphor Bronze

**Ground Plane:**  
Phosphor Bronze

**Plating:**

Au or Sn over 50 μm (1.27 μm) Ni

**Current Rating (QSFP8/Card):**  
1.6 A per pin

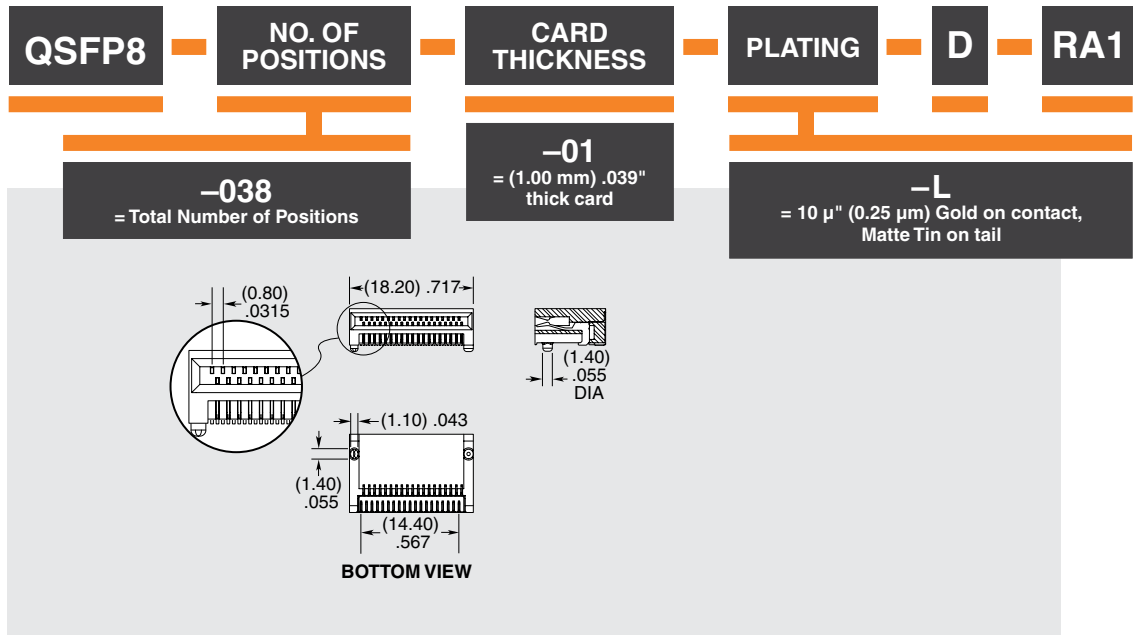
(1 pin powered per row)

## RECOGNITIONS

For complete scope of recognitions see [www.samtec.com/quality](http://www.samtec.com/quality)



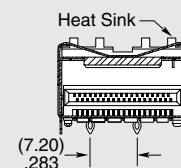
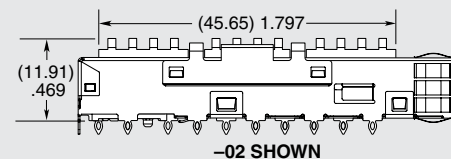
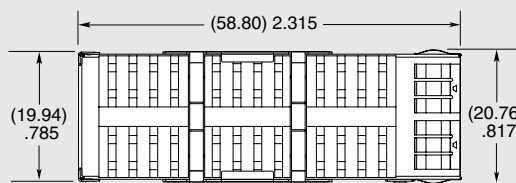
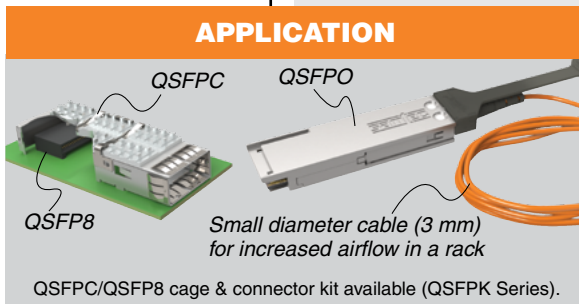
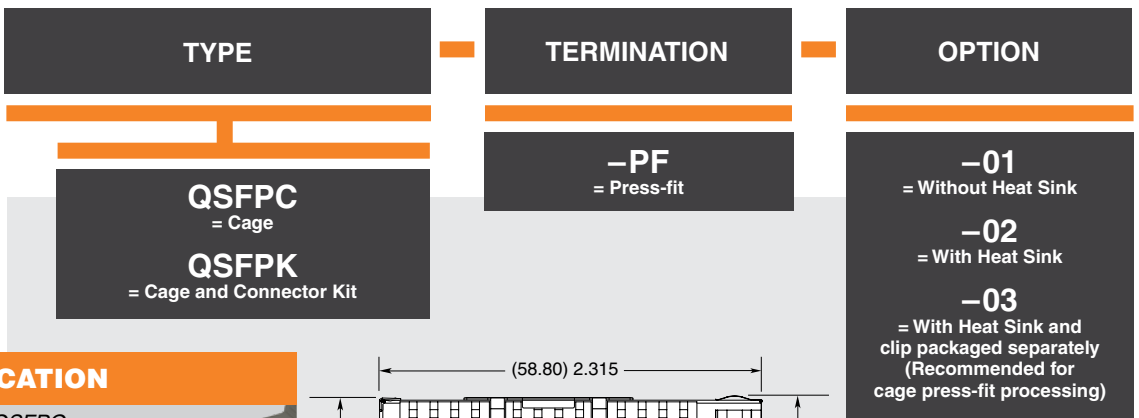
**Note:** Some lengths, styles and options are non-standard, non-returnable.



Use with:  
QSFP8

## SPECIFICATIONS

For complete specifications see [www.samtec.com?QSFP8](http://www.samtec.com?QSFP8) or [www.samtec.com?QSFPK](http://www.samtec.com?QSFPK)



**Note:** Some sizes, styles and options are non-standard, non-returnable.