

### Features

- Low Loss
- Low Ripple
- High Rejection

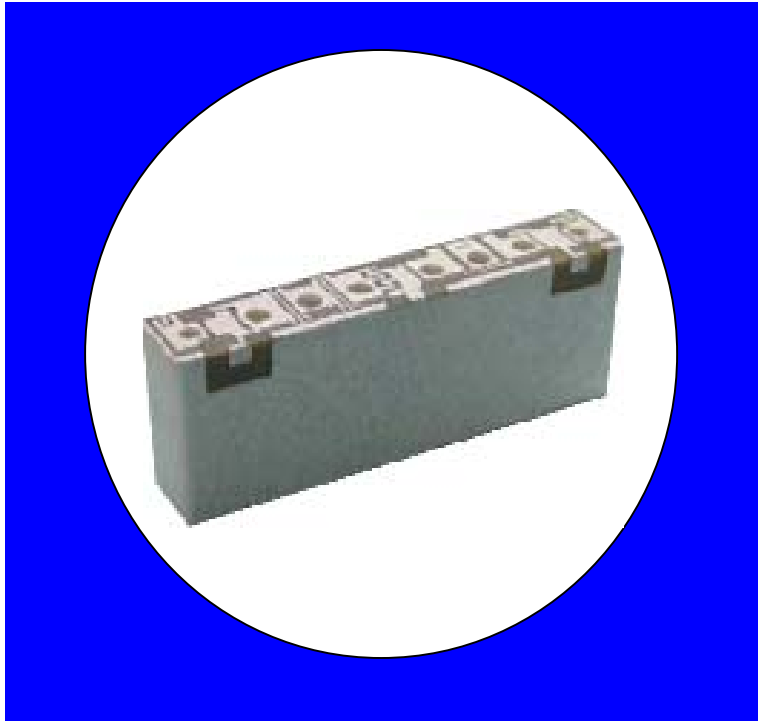
### Description

Surface mount, silver (Ag) coated ceramic duplexer. Developed for use in 800 MHz subscriber and infrastructure applications.

Weight: 3.9 grams typical

Material: Filter is composed of a ceramic block plated with Ag.

Filter complies with RoHS standards.



### Electrical Specifications

Parameter	Frequency (MHz)	Typical @25°C	Spec. @ 25°C	Spec. over -40°C to + 85°C
Pass band Insertion Loss	824 - 849	3.0 dB	3.3 dB	3.5 dB
Pass band Ripple	824 - 849	0.6 dB	0.9 dB	1.0 dB
Pass band Return Loss	824 - 849	13.0 dB	10.0 dB	10.0 dB
Rejection	869 - 894	53.0 dB	50.0 dB	50.0 dB
	804	30.0 dB	10.0 dB	10.0 dB
Power into any port			5.0 Watt max	

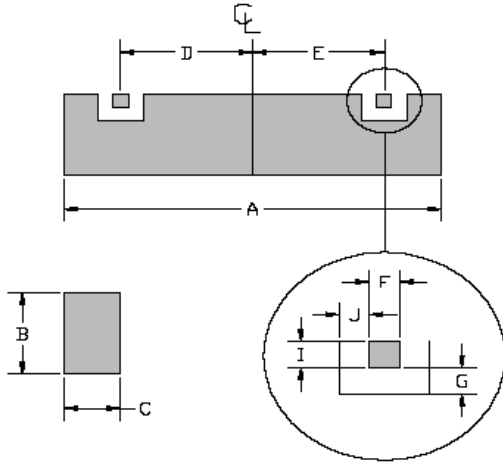
Note: Supplier shall test each filter to the critical electrical specifications of the above table. Any subsequent audits may deviate from in value due to measurement repeatability among different test systems. Such deviations shall not exceed the following limits:

Specification Allowance	
Insertion Loss	0.1 dB
Return Loss	1.0 dB
Stopbands	1.0 dB

\*This product is covered by one or more of the following U.S. and foreign patents including: US 4,692,726;US 4,742,562; US 4,800,348;US 4,829,274;US 5,146,193;EP 0573597;DE 0573597;FR 0573597;JP 508149/92;KR 142171;US 5,162,760;US 5,218,329;US 5,250,916;US 5,327,109;US 5,488,335;CA 2114029;FR 9306297;GB 2273393;JP 3205337;KR 115113;CN 93106228.4;US 5,512,866;EP 0706719;DE 0706719;FR 0706719;GB 0706719;CN 95190359.4;US 5,602,518;US 5,721,520;US 5,745,018;EP 0910875;DE 0910875;DK 0910875;FR 0910875;GB 0910875;IE 0910875;JP 505182/98;KR 10-323013;US 5,994,978;US 6,462,629;CN 00810420.4;US 6,559,735;US 6,650,202;US 6,834,429. Other US and foreign patents pending.

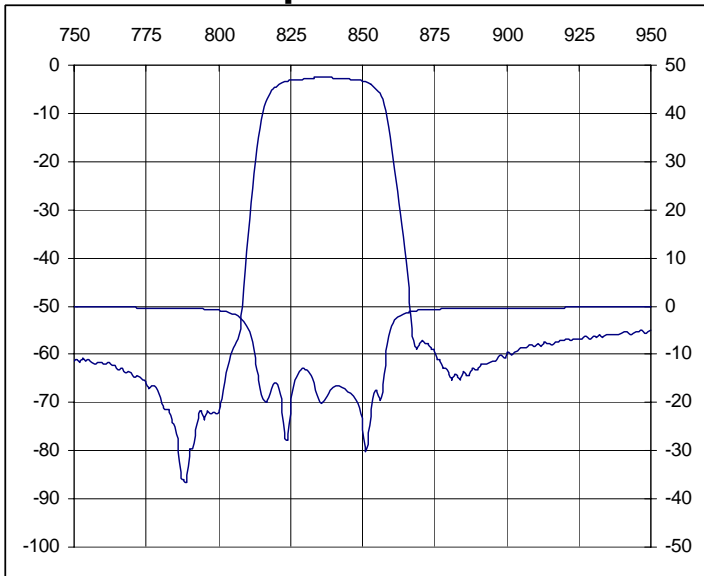
\*CTS Corporation 2006 reserves all copyrights in the layout, design and configuration of the patterns on this product.\*

## Mechanical Drawing

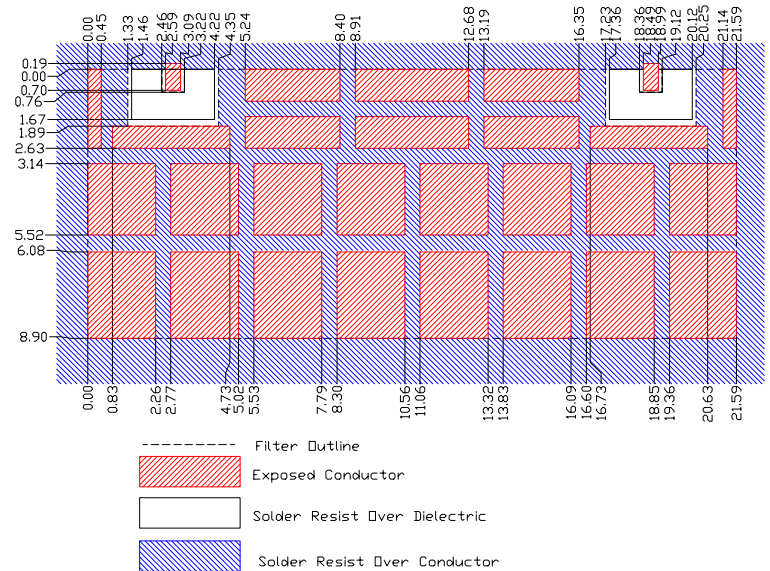


Dim	Nominal (mm)	Tolerance (mm) +/- or max
A	21.54	max
B	8.9	max
C	4.00	max
D	7.95	0.25
E	7.95	0.25
F	0.76	0.13
G	1.00	0.13
H		
I	0.76	0.13
J	1.0	0.13

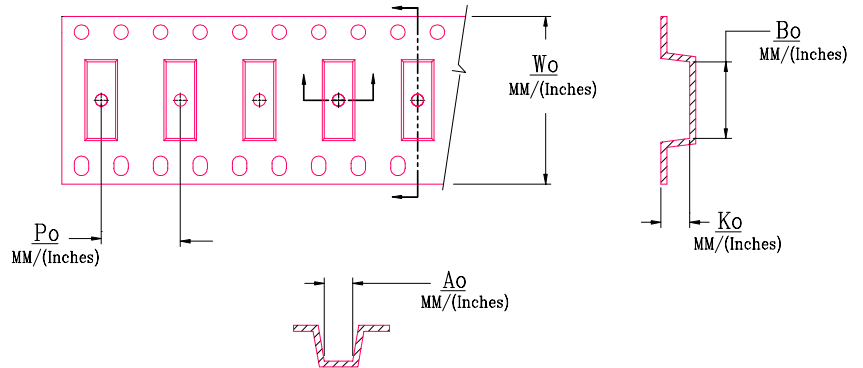
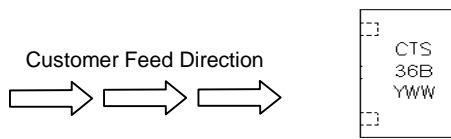
## Electrical response



## PCB Layout



## Packaging and Marking



DIMENSION	UNITS	SPECIFICATION
REEL DIAMETER	mm	330
REEL WEIGHT	kg	2.7
REEL QUANTITY	ea.	500

MODEL NO.	Wo	Ao	Bo	Ko	Po
CER0236	44.0/(1.732)	9.91/(0.390)	21.97/(0.865)	4.19/(0.165)	16.0/(0.630)