

DESCRIPTION: 15 POSITION SLIDE LOCK

SCREW

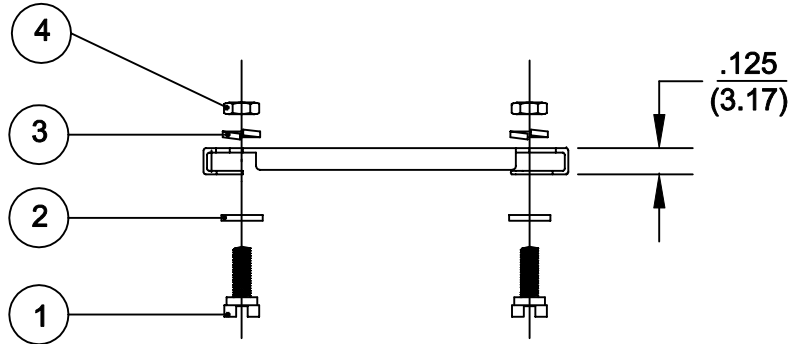
| |
|----------|
| ITEM NO. |
| 1 |

FLAT & SPLIT WASHERS

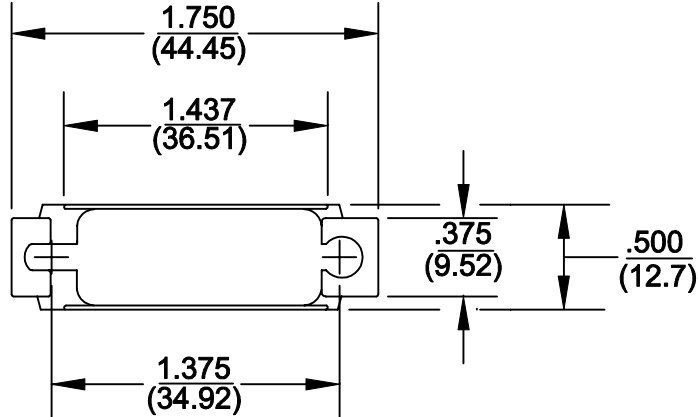
| ITEM NO. | ID | OD | WIDTH |
|----------|------|------|-------|
| 2 | .120 | .220 | .031 |
| 3 | .120 | .200 | .031 |

HEX NUT


| ITEM NO. | ID | OD | WIDTH |
|----------|------|------|-------|
| 4 | 4-40 | .187 | .062 |



- KIT INCLUDES:**
 (1) SLIDE LOCK BAR
 (2) 4-40 POSTS
 (2) FLAT WASHERS
 (2) LOCK WASHERS
 (2) 4-40 NUTS



MATERIALS:
 SLIDE LOCK: STAINLESS STEEL
 WASHER, LOCK WASHER, NUT: STEEL
 YELLOW CHROMATE PLATING

| | | | | |
|--|---|--------------------------------|--------------------------------|-------------------------|
|  | THESE DRAWINGS AND SPECIFICATIONS ARE THE PROPERTY OF NorComp AND SHALL NOT BE REPRODUCED, COPIED OR USED AS THE BASIS FOR THE MANUFACTURE OF SALE OF APPARATUS WITHOUT WRITTEN PERMISSION. | | DRAWN: WAYNE ROBBINS | DATE: 9-16-98 |
| | | | CHECKED: | DATE: |
| <h1>NorComp</h1> | | SCALE: 1:1 | SHEET 1 OF 1 | REV 1 |
| | | DWG NO. 160-015-003-031 | | |