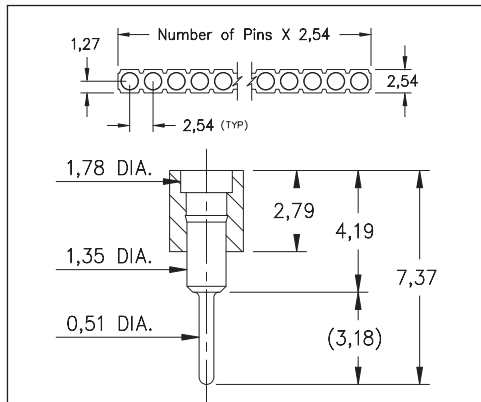
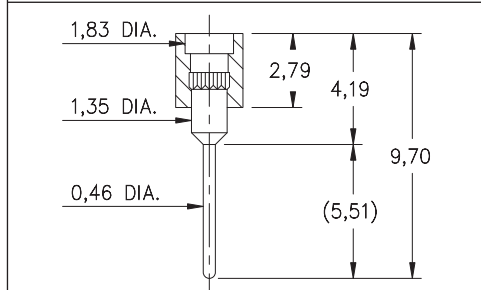


# SPRING-LOADED CONNECTORS

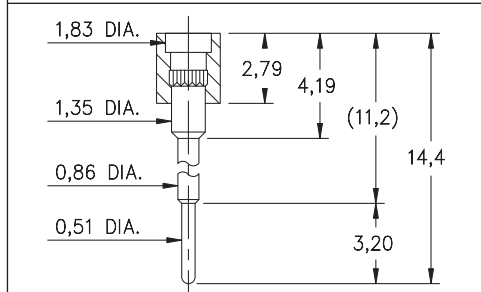
## SERIES 319, 330 • 2,54 GRID TARGET CONNECTORS FOR SPRING-LOADED ASSEMBLIES • SINGLE ROW STRIPS



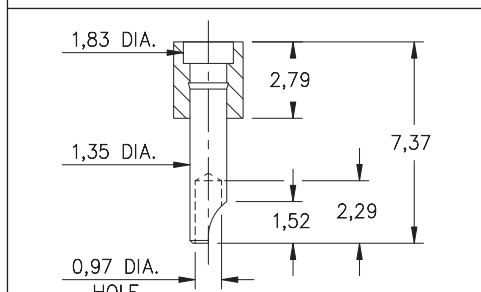
**FIG. 1**



**FIG. 2**

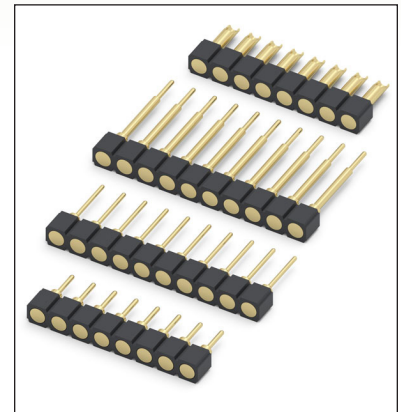


**FIG. 3**



**FIG. 4**

- Series 319 and 330 Spring Target Connectors, supplied in single row strips. Available in through-hole and wire termination configurations
- Target Connectors provide an excellent gold-plated conductive mating surface for spring loaded connectors. These series are offered with a flat face for making contact with our standard 1,07 dia. spring pin plungers
- Target connectors use MM #1938, #1940, #1942 and #3024 pins. See page 218 for details
- Insulators are high temperature thermoplastic



### ORDERING INFORMATION

<b>FIG. 1</b>	<b>Series 319...001</b>	<b>Standard Solder Tails</b>
	319-10-1__-00-001000	Specify number of pins $\uparrow$ 01-64
<b>FIG. 2</b>	<b>Series 319...002</b>	<b>Long Solder Tails</b>
	319-10-1__-00-002000	Specify number of pins $\uparrow$ 01-64
<b>FIG. 3</b>	<b>Series 319...005</b>	<b>Elevated with Solder Tails</b>
	319-10-1__-00-005000	Specify number of pins $\uparrow$ 01-64
<b>FIG. 4</b>	<b>Series 330...240</b>	<b>Solder Cups</b>
	330-10-1__-00-240000	Specify number of pins $\uparrow$ 01-64
<div style="display: flex; justify-content: space-around; align-items: center;"> <div style="border: 1px solid black; padding: 5px; background-color: #90EE90;">RoHS-2 2011/65/EU</div> <div style="border: 1px solid black; border-radius: 50%; padding: 5px;">XX=Plating Code See Below</div> <div style="border: 1px solid black; border-radius: 50%; padding: 5px;">For Electrical, Mechanical &amp; Environmental Data, See page 264</div> </div>		
SPECIFY PLATING CODE XX=		
Pin Plating	10 $\blacklozenge$	0,25 $\mu$ m Au