

Table with 5 columns: PART NUMBER, REVISION, DESCRIPTION, FEED TYPE, and CONVERT TO. It lists various crimp heights and their corresponding part numbers and feed types (Mechanical, Pneumatic, Servo Latch Plate, None).

APPLICATOR DATA table with columns: CRIMP SIZE, WIRE, INSUL, and APPL INSTRUCTIONS. It specifies crimp size (2.79 mm), wire (F), insulation (OV), and instructions (408-10390).

Terminal data table including terminal specifications, wire strip length (5.80-6.60 mm), insulation diameter range (2.10-3.10 mm), terminal application specification (114-2025), and terminals applied (TE TERMINAL 160927-1 to 160927-4).

Wire size and crimp height table with columns: WIRE SIZE, CRIMP HEIGHT mm [INCH], and CRIMP HEIGHT REFERENCE SETTING. It lists settings for 2.50mm, 2.00mm, 1.50mm, and 1.00mm wire sizes.



- RECOMMENDED SPARE PARTS
GREASE BEARING SURFACES LIGHTLY
LUBRICATE DAILY PER THE APPLICATOR INSTRUCTION SHEET SUPPLIED WITH THE APPLICATOR.
APPLICATOR SPECIFIC DATA TO BE ENTERED INTO BLANK MEMORY CHIP AT ASSEMBLY.
ADJUSTMENT OF THE STRIPPER MAY BE REQUIRED WHEN MOVING THE APPLICATOR BETWEEN BENCH AND LEADMAKER APPLICATIONS.

- WHEN ASSEMBLING -6 NON-CRIMP HEIGHT ADJUST APPLICATOR USE SHIM PACK 2119957-2 TO ALIGN APPLICATOR'S MAXIMUM WIRE CRIMP HEIGHT AT NORMAL TERMINATOR SHUT HEIGHT
CUT TO LENGTH AT ASSEMBLY.

*WARNING
ON INSTALLATION, SET WIRE DISC, ITEM 40 TO LARGEST WIRE SIZE SETTING. USE OF SETTINGS BELOW MINIMUM REQUIRED CRIMP HEIGHT SETTING WILL CAUSE DAMAGE TO CRIMP TOOLING.

Table with 3 columns: PART NO, DESCRIPTION, ITEM NO. It lists various parts like APPLICATOR SHIM PACK, O-RING, PUSH ROD, BUSHING, FEED CAM, DETENT PIN, SPRING, and RAM, AMP STYLE.

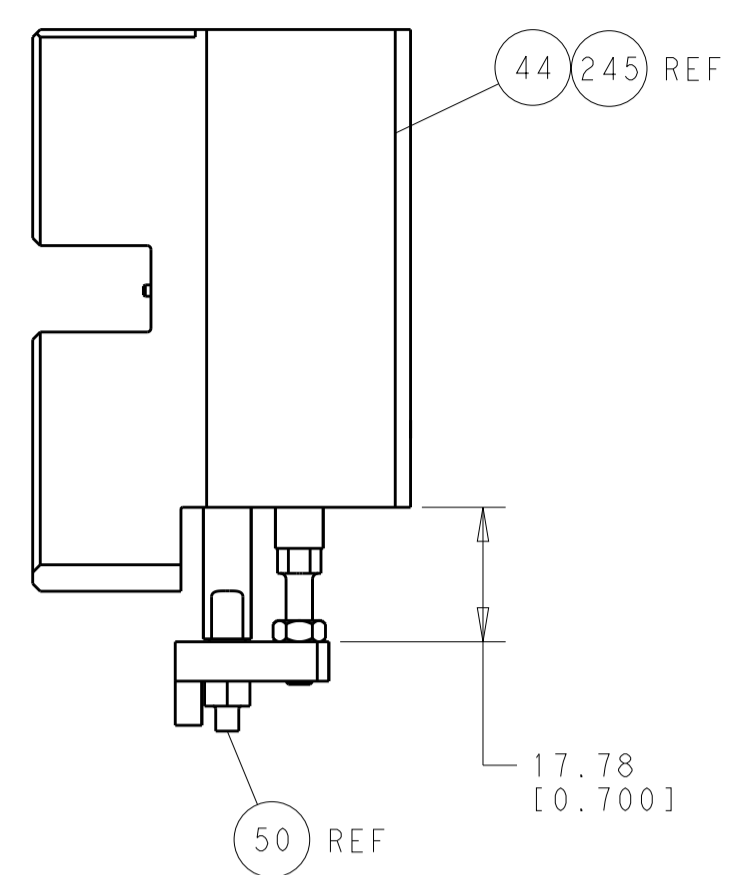
ATLANTIC VERSION
Shown on sheets 1 of 4 & 2 of 4
(Pacific version shown on sheets 3 of 4 & 4 of 4)

SET UP GAUGE table with columns: LOC, DIST, REVISIONS. It shows setup gauge 2119599-2, location A, distance 66, and revision history.

Main parts list table with columns: QTY, PART NO, DESCRIPTION, DATE, DWN, APVD. It lists a wide range of parts including washers, springs, screws, nuts, and various applicator components.

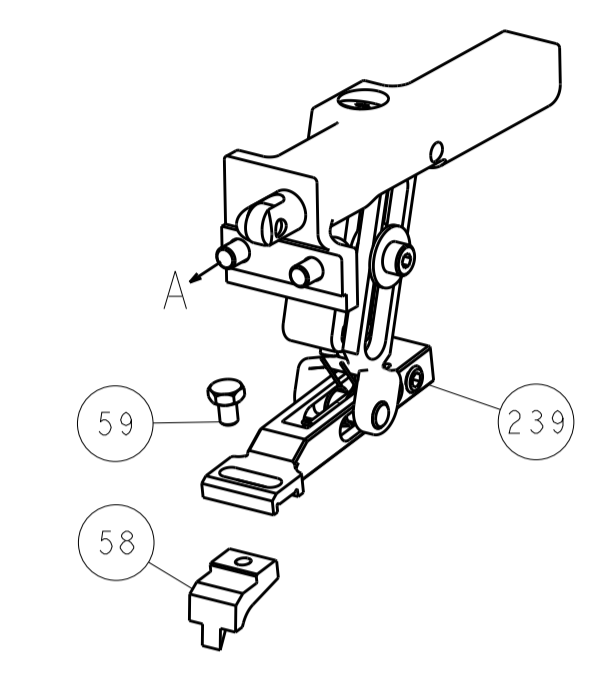
Technical drawing header table with columns: DIMENSIONS, TOLERANCES UNLESS OTHERWISE SPECIFIED, MATERIAL, FINISH, WEIGHT, SCALE, SHEET 1 OF 4, REV B.

LOC		DIST		REVISIONS			
A	66	P	LTM	DESCRIPTION	DATE	OWN	APVD
				SEE SHEET 1			

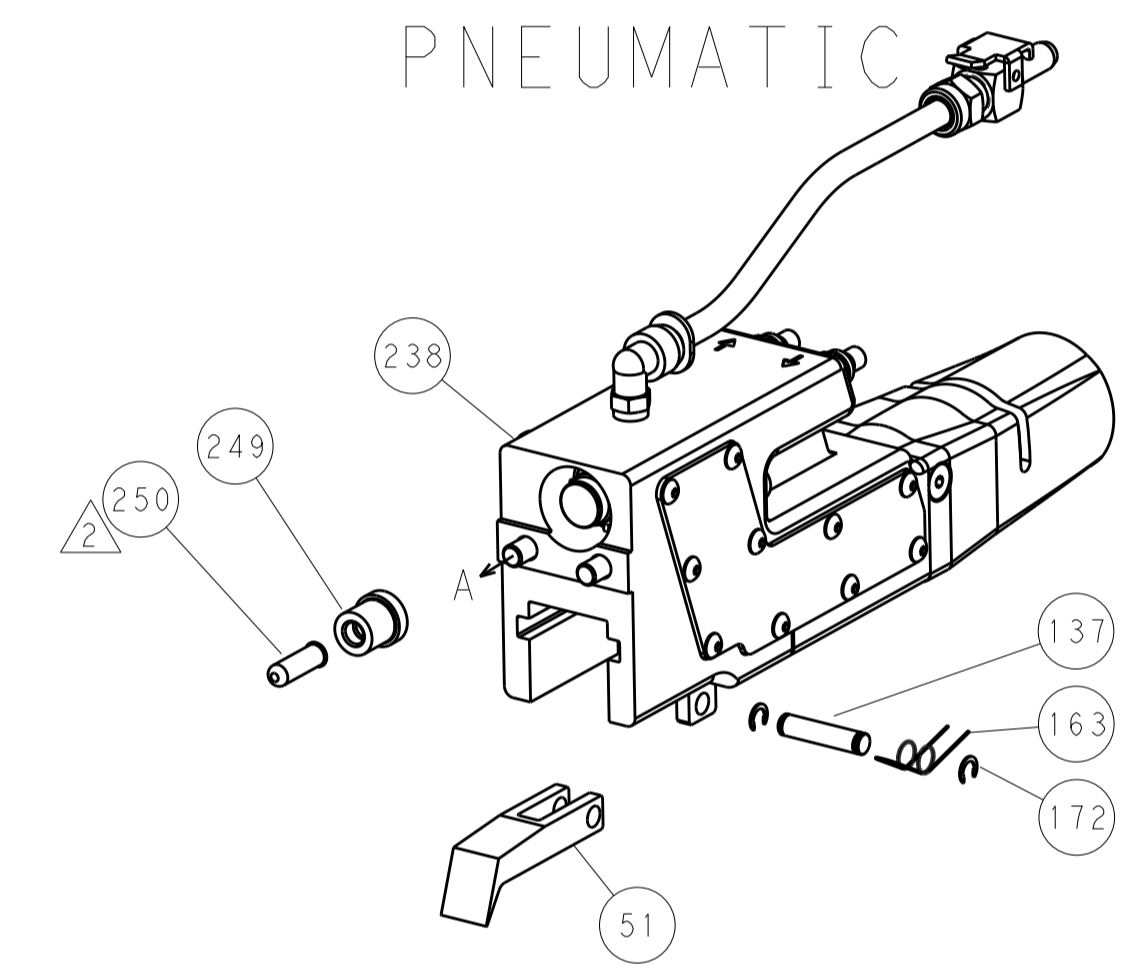


HOLDDOWN SET-UP

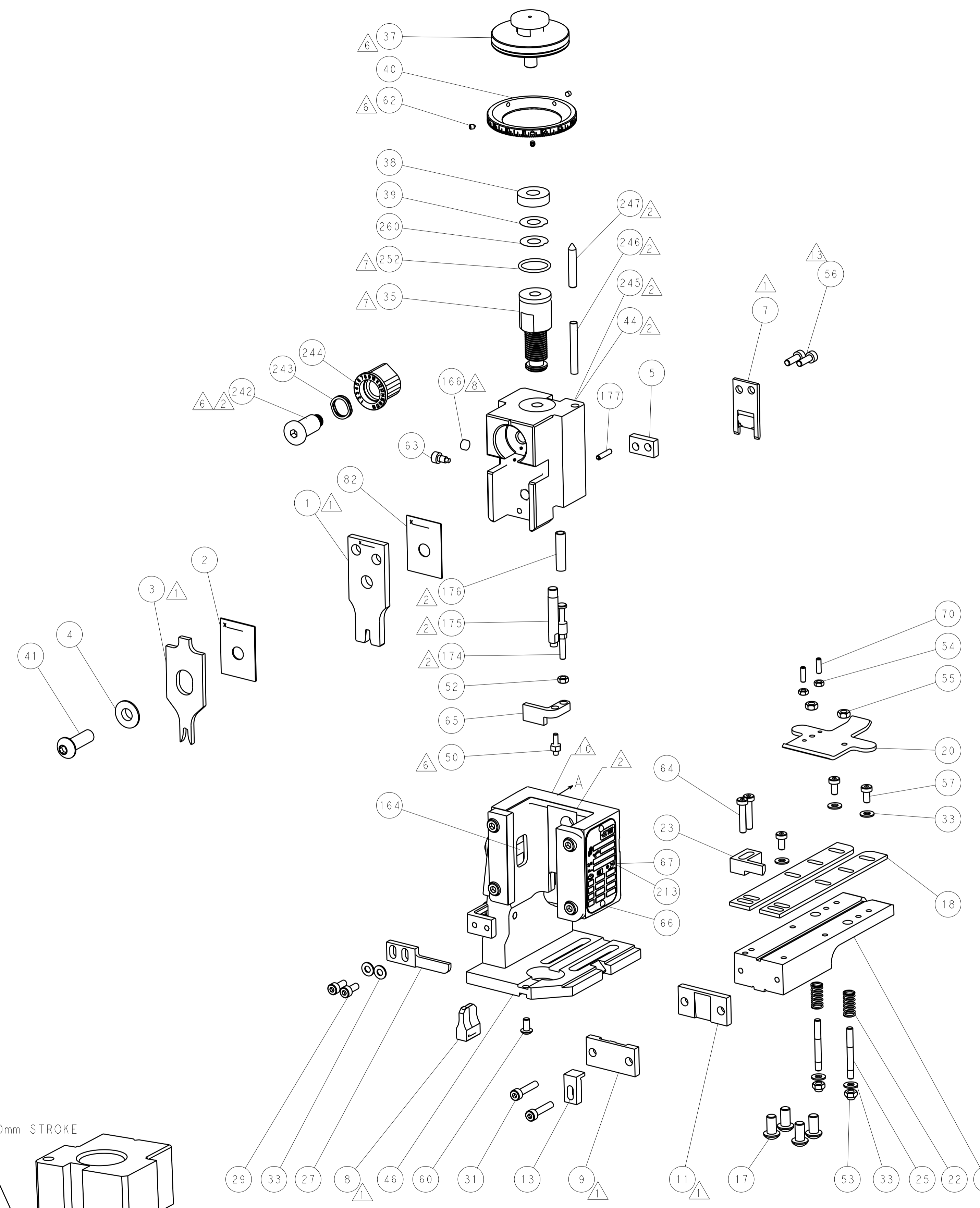
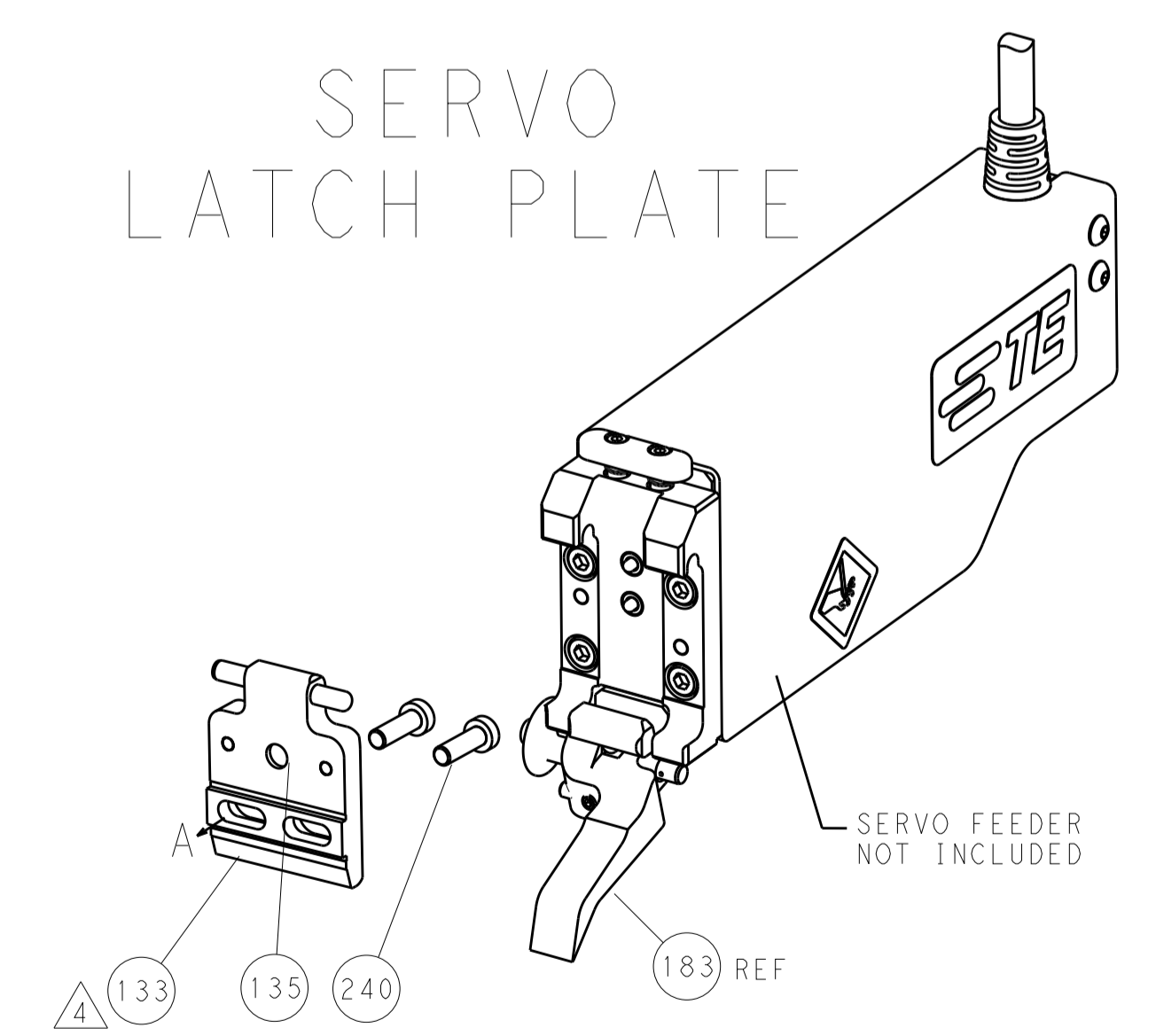
FEED TYPE
MECHANICAL



PNEUMATIC



SERVO
LATCH PLATE



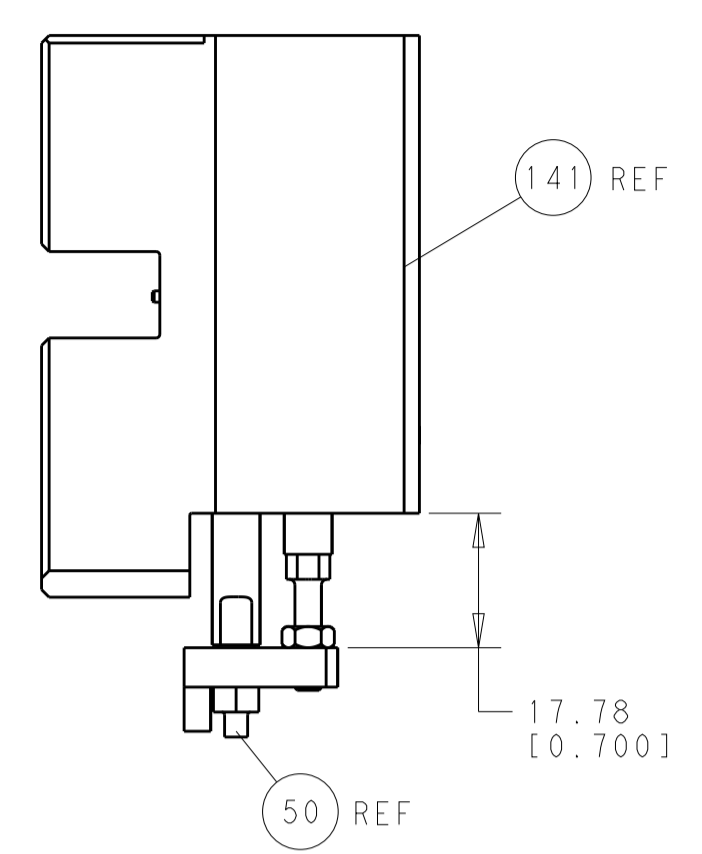
CAM POSITIONS



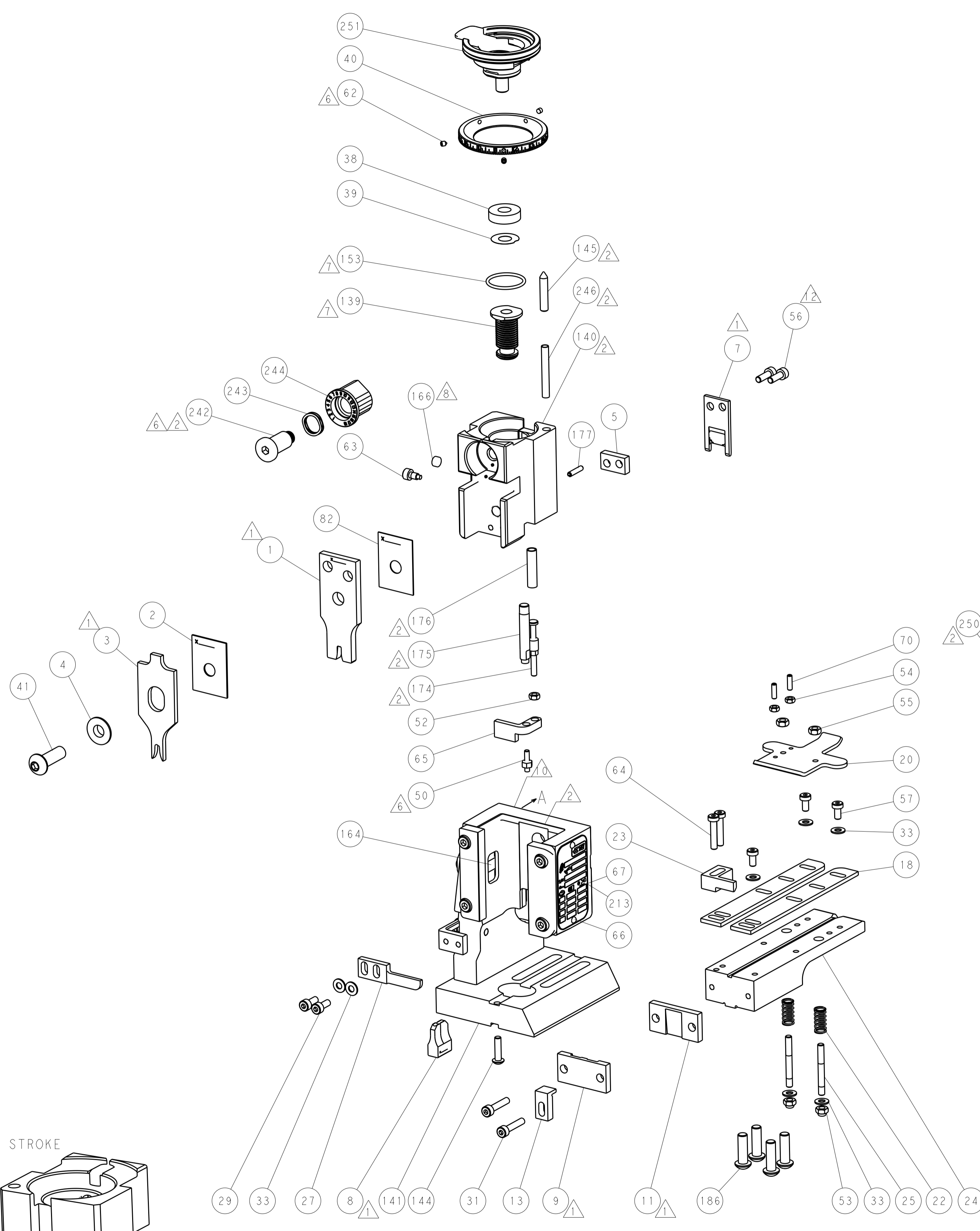
ATLANTIC VERSION
 Shown on sheets 1 of 4 & 2 of 4
 (Pacific version shown on sheets 3 of 4 & 4 of 4)

DIMENSIONS:		TOLERANCES UNLESS OTHERWISE SPECIFIED:		OWN: HOFFNER 11JUN2013		TE Connectivity	
mm		0 PLC ±0.5		CHK: T. ELBIN 12JUN2013		Harrisburg, PA 17105-3608	
Ø		1 PLC ±0.13		APVD: T. ELBIN 12JUN2013		NAME: Ocean End Feed Applicator	
H		2 PLC ±0.013		PRODUCT SPEC		SIZE: CAGE CODE DRAWING NO	
L		3 PLC ±0.001		APPLICATION SPEC		RESTRICTED TO	
R		4 PLC ±0.001		WEIGHT		A1 00779 C=2150191	
FINISH		ANGLES		MATERIAL		Customer Accessible Production Drawing	
				SCALE: 1:1		SHEET 2 OF 4 REV B	

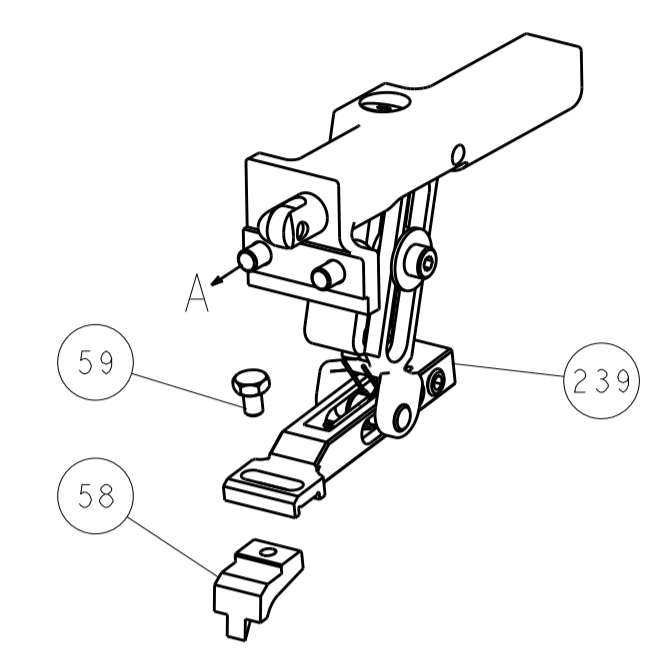
LOC		DIST		REVISIONS			
A	66	P	LTM	DESCRIPTION	DATE	OWN	APVD
				SEE SHEET 1			



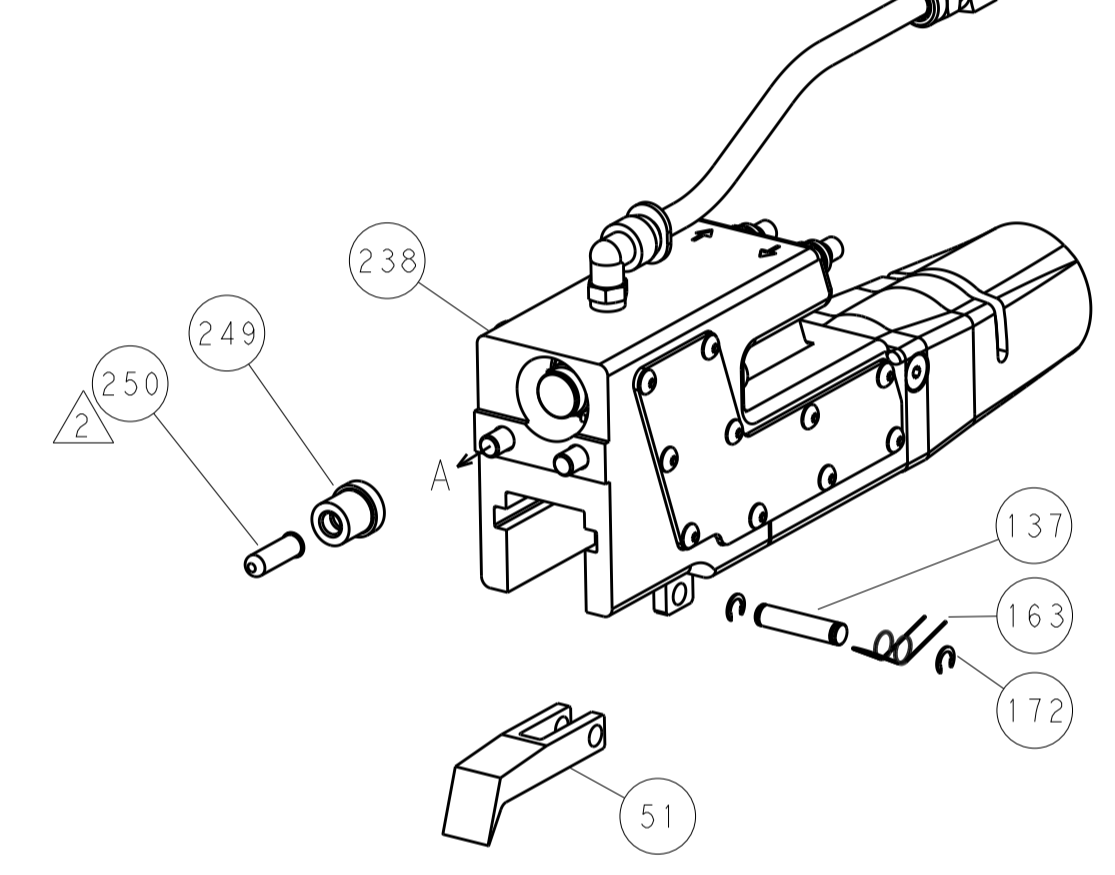
HOLDDOWN SET-UP



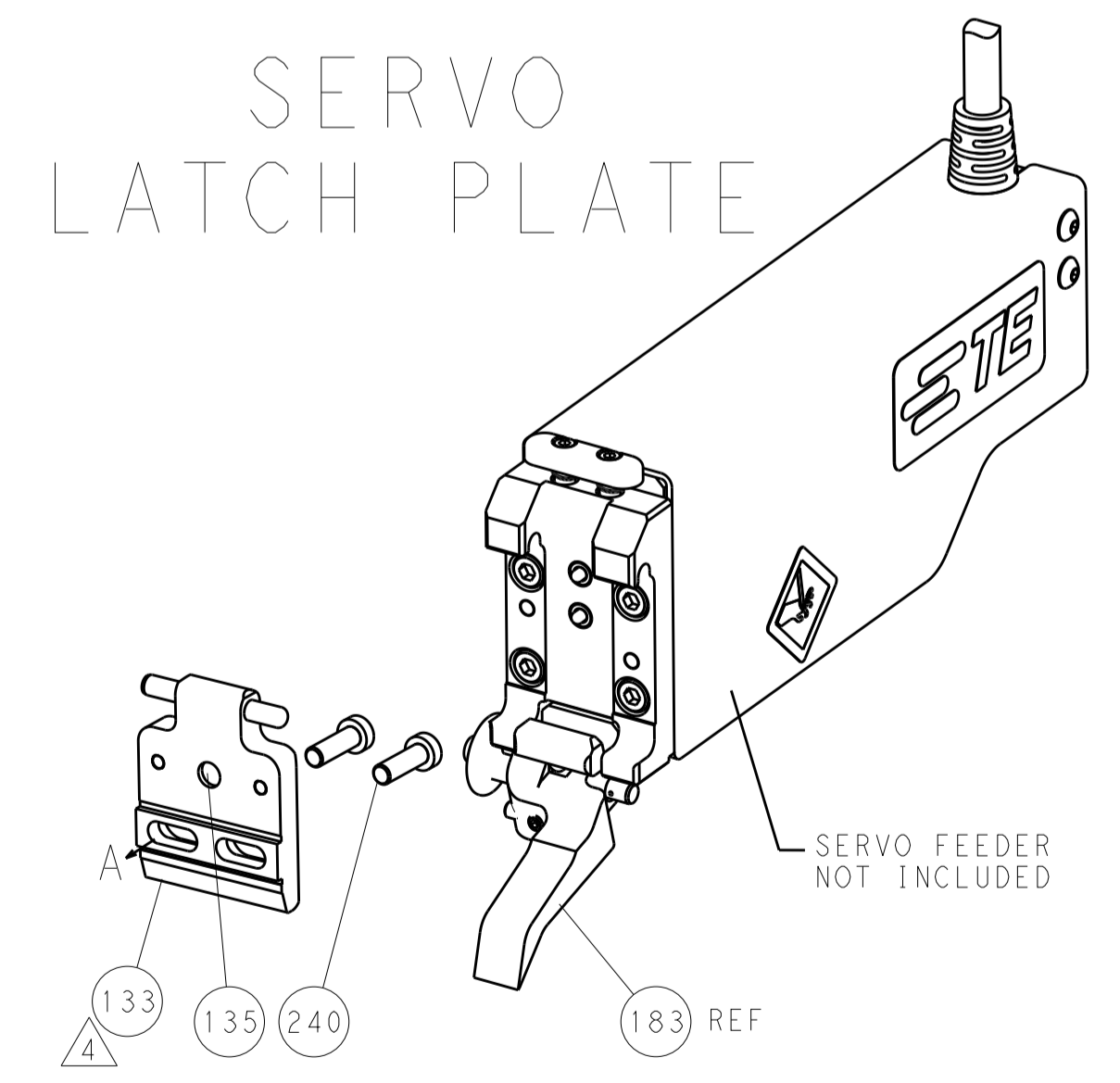
FEED TYPE
MECHANICAL



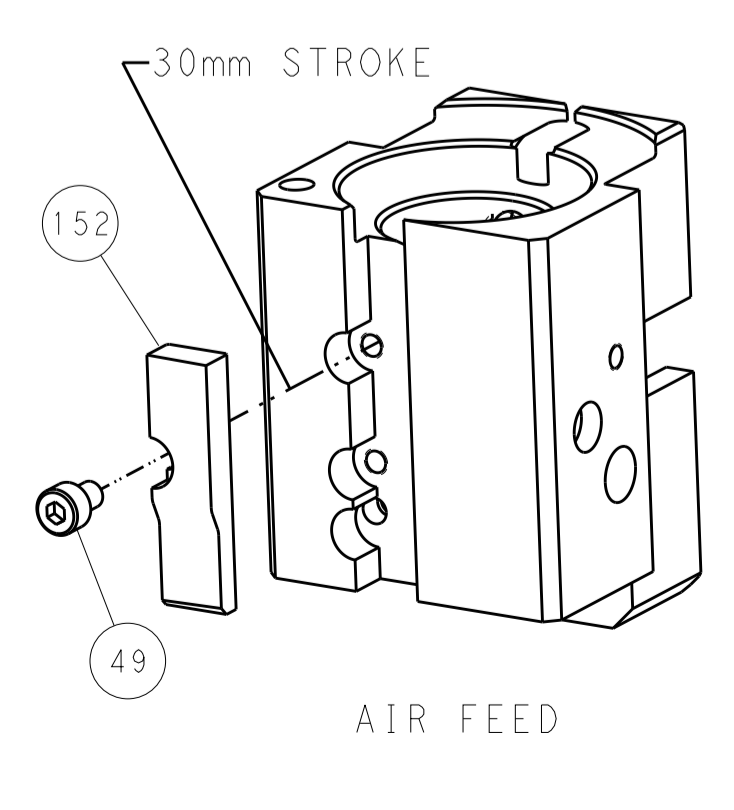
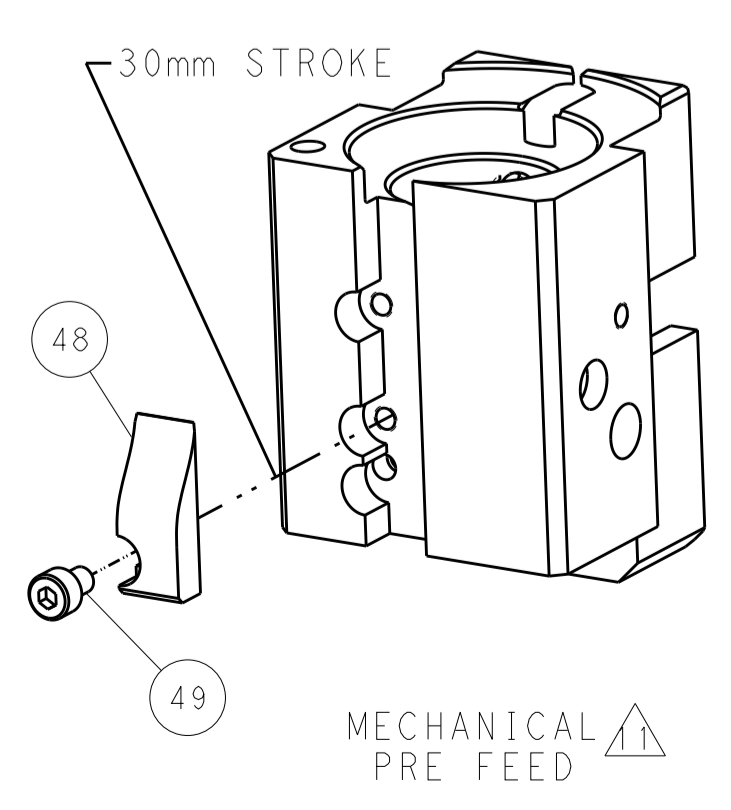
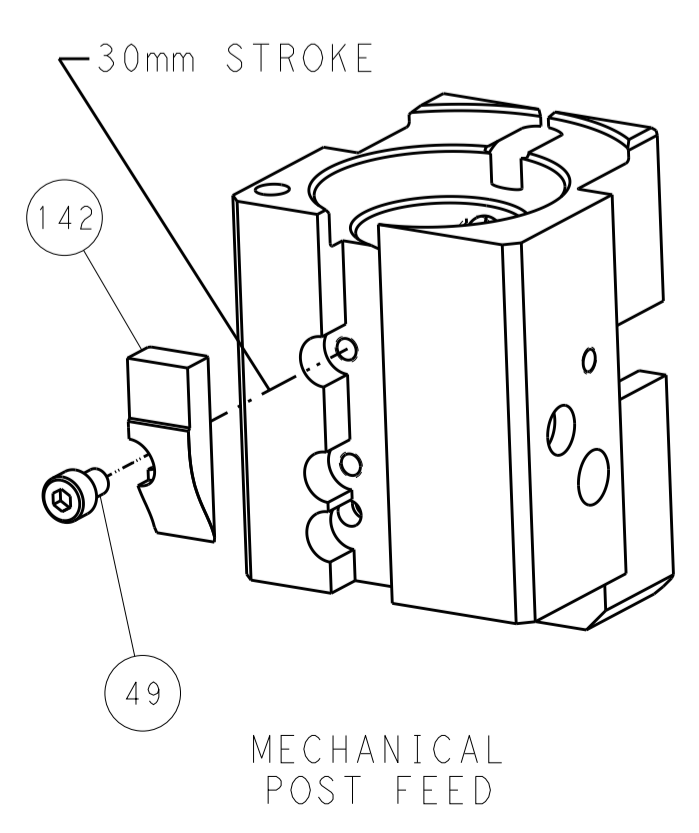
PNEUMATIC



SERVO
LATCH PLATE



CAM POSITIONS



PACIFIC VERSION
 Shown on sheets 3 of 4 & 4 of 4
 (Atlantic version shown on sheets 1 of 4 & 2 of 4)

DIMENSIONS:		TOLERANCES UNLESS OTHERWISE SPECIFIED:		DWN: HOFFNER 11JUN2013		TE Connectivity Harrisburg, PA 17105-3608	
mm	0 PLC ±0.5	1 PLC ±0.5	2 PLC ±0.13	3 PLC ±0.013	4 PLC ±0.001	APVD: T. ELBIN 12JUN2013	NAME: Ocean End Feed Applier
MATERIAL:	FINISH:	WEIGHT:	SCALE: 1:1	SHEET: 4	OF: 4	REV: B	RESTRICTED TO: