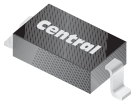


CMHD3595

**SURFACE MOUNT
LOW LEAKAGE
SILICON DIODE**



SOD-123 CASE



www.centrasemi.com

DESCRIPTION:

The CENTRAL SEMICONDUCTOR CMHD3595 is a Silicon Diode, manufactured by the epitaxial planar process, epoxy molded in a surface mount package, designed for high conductance applications requiring low leakage.

MARKING CODE: C95

MAXIMUM RATINGS: ($T_A=25^\circ\text{C}$)

Peak Repetitive Reverse Voltage
Peak Working Reverse Voltage
Average Forward Current
Continuous Forward Current
Recurrent Peak Forward Current
Peak Forward Surge Current, $t_p=1.0\text{s}$
Peak Forward Surge Current, $t_p=1.0\mu\text{s}$
Power Dissipation
Operating and Storage Junction Temperature
Thermal Resistance

SYMBOL

V_{RRM} 150
 V_{RWM} 125
 I_O 150
 I_F 225
 i_f 600
 I_{FSM} 500
 I_{FSM} 4.0
 P_D 400
 T_J, T_{stg} -65 to +150
 Θ_{JA} 312.5

UNITS

V
V
mA
mA
mA
mA
A
mW
 $^\circ\text{C}$
 $^\circ\text{C/W}$

ELECTRICAL CHARACTERISTICS: ($T_A=25^\circ\text{C}$ unless otherwise noted)

SYMBOL	TEST CONDITIONS	MIN	MAX	UNITS
I_R	$V_R=125\text{V}$		1.0	nA
I_R	$V_R=125\text{V}, T_A=125^\circ\text{C}$		500	nA
I_R	$V_R=125\text{V}, T_A=150^\circ\text{C}$		3.0	μA
I_R	$V_R=30\text{V}, T_A=125^\circ\text{C}$		300	nA
BV_R	$I_R=100\mu\text{A}$	150		V
V_F	$I_F=1.0\text{mA}$	0.54	0.69	V
V_F	$I_F=5.0\text{mA}$	0.62	0.77	V
V_F	$I_F=10\text{mA}$	0.65	0.80	V
V_F	$I_F=50\text{mA}$	0.75	0.88	V
V_F	$I_F=100\text{mA}$	0.79	0.92	V
V_F	$I_F=200\text{mA}$	0.83	1.00	V
C_T	$V_R=0, f=1.0\text{MHz}$		8.0	pF
t_{rr}	$V_R=3.5\text{V}, I_F=10\text{mA}, R_L=1.0\text{k}\Omega$		3.0	μs

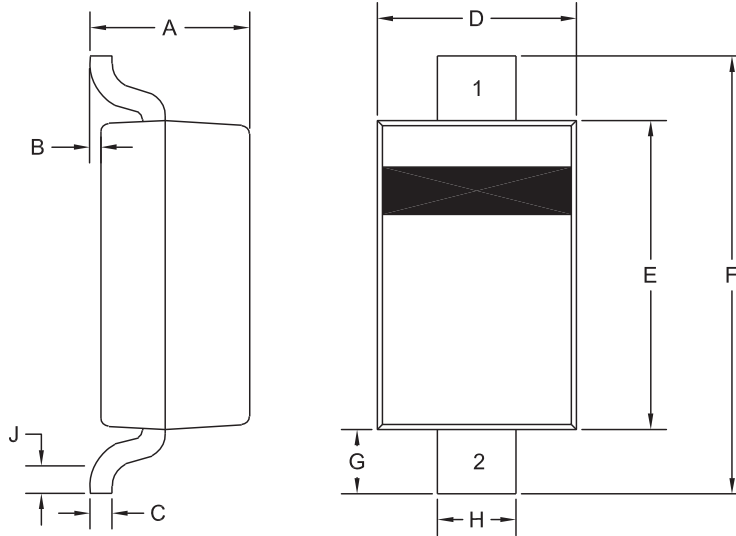
R5 (5-August 2010)

CMHD3595

SURFACE MOUNT
LOW LEAKAGE
SILICON DIODE



SOD-123 CASE - MECHANICAL OUTLINE



R5

LEAD CODE

- 1) Cathode
- 2) Anode

MARKING CODE: C95

DIMENSIONS				
SYMBOL	INCHES		MILLIMETERS	
	MIN	MAX	MIN	MAX
A	0.037	0.053	0.95	1.35
B	0.000	0.005	0.00	0.12
C	-	0.008	-	0.20
D	0.055	0.071	1.40	1.80
E	0.098	0.110	2.50	2.80
F	0.142	0.154	3.60	3.90
G	0.016	-	0.40	-
H	0.020	0.028	0.50	0.70
J	0.010	-	0.25	-

SOD-123 (REV:R5)

R5 (5-August 2010)

OUTSTANDING SUPPORT AND SUPERIOR SERVICES



PRODUCT SUPPORT

Central's operations team provides the highest level of support to insure product is delivered on-time.

- Supply management (Customer portals)
- Inventory bonding
- Consolidated shipping options
- Custom bar coding for shipments
- Custom product packing

DESIGNER SUPPORT/SERVICES

Central's applications engineering team is ready to discuss your design challenges. Just ask.

- Free quick ship samples (2nd day air)
- Online technical data and parametric search
- SPICE models
- Custom electrical curves
- Environmental regulation compliance
- Customer specific screening
- Up-screening capabilities
- Special wafer diffusions
- PbSn plating options
- Package details
- Application notes
- Application and design sample kits
- Custom product and package development

REQUESTING PRODUCT PLATING

1. If requesting Tin/Lead plated devices, add the suffix " TIN/LEAD" to the part number when ordering (example: 2N2222A TIN/LEAD).
2. If requesting Lead (Pb) Free plated devices, add the suffix " PBFREE" to the part number when ordering (example: 2N2222A PBFREE).

CONTACT US

Corporate Headquarters & Customer Support Team

Central Semiconductor Corp.
145 Adams Avenue
Hauppauge, NY 11788 USA
Main Tel: (631) 435-1110
Main Fax: (631) 435-1824
Support Team Fax: (631) 435-3388
www.centrasemi.com

Worldwide Field Representatives:
www.centrasemi.com/wwreps

Worldwide Distributors:
www.centrasemi.com/wwdistributors

For the latest version of Central Semiconductor's **LIMITATIONS AND DAMAGES DISCLAIMER**, which is part of Central's Standard Terms and Conditions of sale, visit: www.centrasemi.com/terms