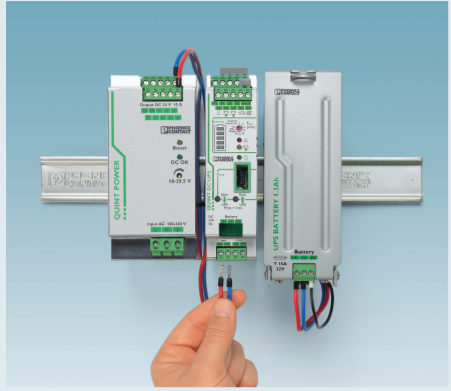


Quick start guide

for QUINT UPS-IQ uninterruptible power supply and UPS-CONF configuration and management software

1 Hardware installation

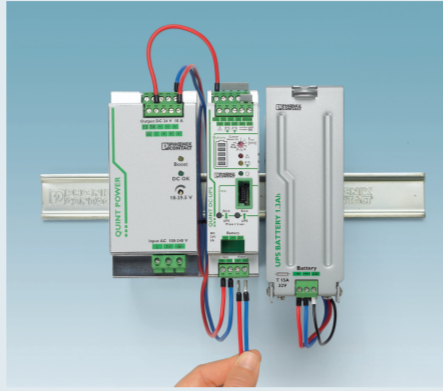
Complete the following work steps to wire the hardware.



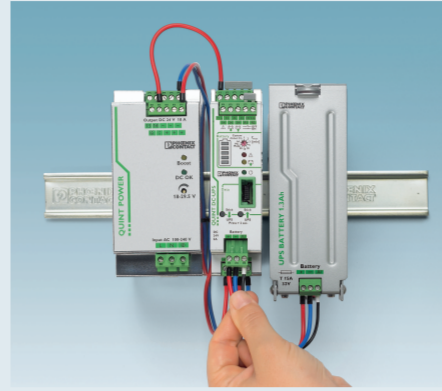
1.1. Connect the 24V output of the QUINT POWER power supply unit to the 24V UPS input.



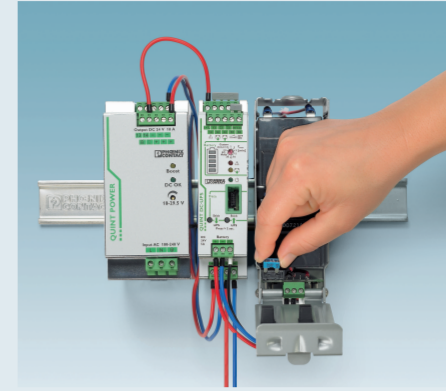
1.2. Wire the I>N signal contact.



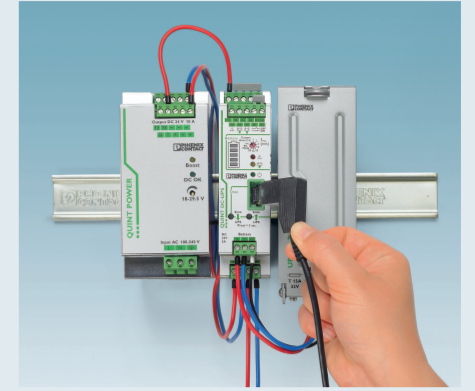
1.3. Connect the load to the UPS output.



1.4. Connect the battery cable. Check the cable cross section in the respective package slip.

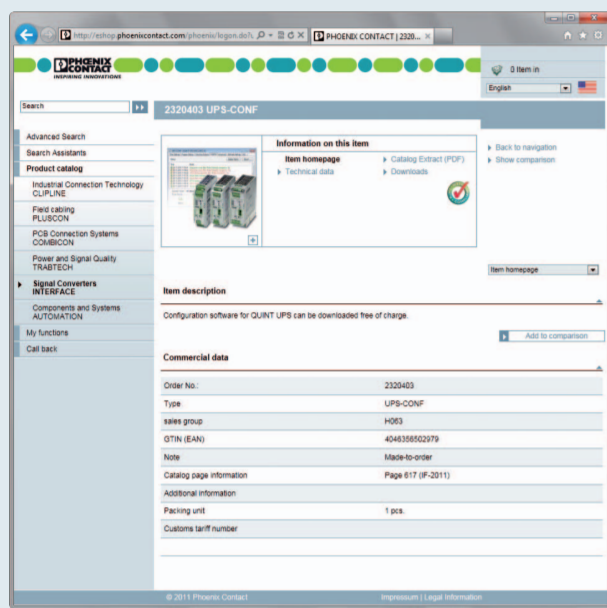


1.5. Plug in the enclosed fuse. After connecting the mains the hardware is now fully functional. (The fuse should be removed if storing the battery for a long time).



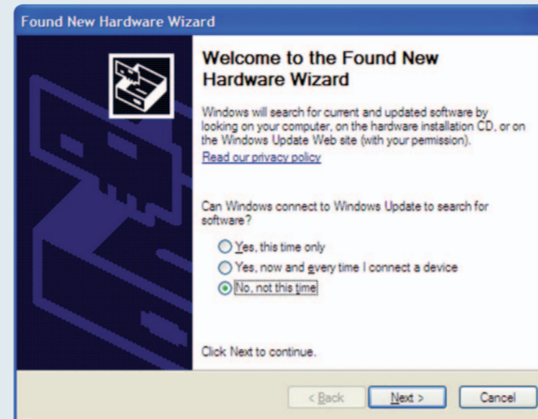
1.6. If the UPS-CONF software is to be used, connect the IFS-USB-DATACABLE.

2 Software installation

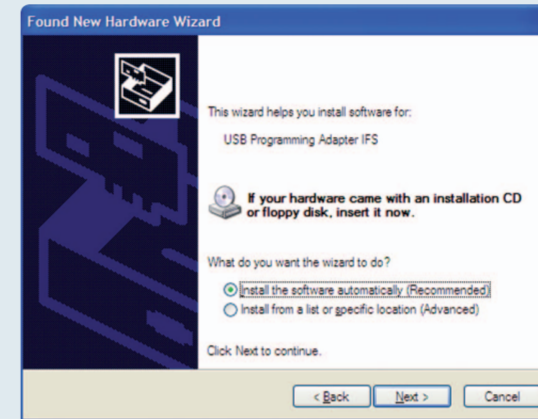


After you have completed the download from www.phoenixcontact.net/catalog, open the installation file by double-clicking and following the instructions.

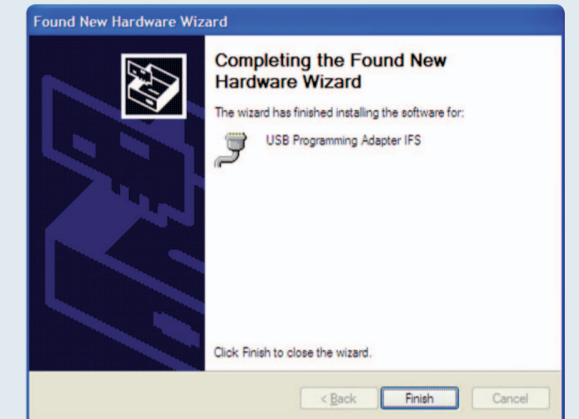
Installation on Windows XP:
As soon as the driver installation wizard opens, please proceed as follows



2.1. Select "No, not this time" and click "Next".



2.2. Choose "Install software automatically" and then click "Next".



2.3. Following successful installation, confirm with "Done".

3 Brief instructions to UPS-CONF

Device information
Here you find the UPS device type. Optionally, you can insert text under "Settings/Advanced/Place of Installation".

Software menu with navigation bar

System menu
Here you find information on basic settings and manufacturer information. You can adjust the following software settings:

- Language setting, changes take place once the software is restarted (German, English)
- Select temperature unit (Celsius, Kelvin, Fahrenheit)
- Check the communication port for the IFS-USB-DATACABLE data cable and change if necessary (COM x)
- Advanced views active: extensive information about the UPS and the battery unit appear in the menu

Status bar
The current status of all components provides a quick overview.

Action area
The content depends on the navigation. The system overview is mapped as an example. Modules, voltages and signals are identified and currently displayed.

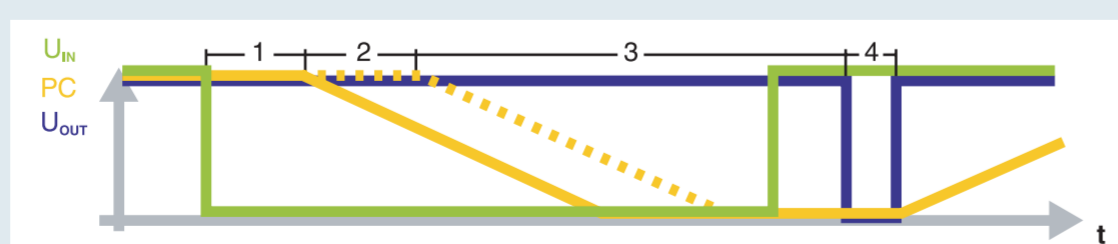
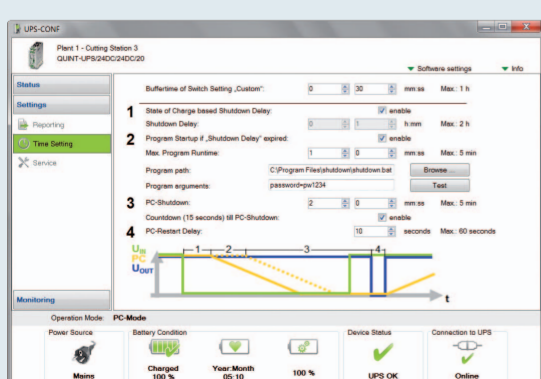
Intelligent battery management
Note: fully functional only once the battery is fully charged.

SOC (State Of Charge) – current charging state and remaining back-up time of the battery unit.

SOH (State Of Health) – remaining life expectancy of the battery unit; provides early warning for a potential battery unit failure.

SOF (State Of Function) – determines the current performance of the battery unit.

4 PC mode: Time settings for shutting down the PC/IPC



1 Shutdown delay
Delay time is calculated automatically from the current remaining battery life minus the time required by the PC / IPC to shut-down. Alternatively, a fixed delay time may be chosen.

2 Program startup
After the delay time has expired it is possible to start a program. Example: a software starts that gradually backs up system data.

3 PC shutdown
The time required by the PC/IPC to shut down is set here.

4 PC restart delay
Only if the PC/IPC is shut down, and the mains has returned in the meantime, the output voltage will be interrupted for the reset time. The PC/IPC is then automatically restarted.

Requirements:

- Data cable IFS-USB-DATACABLE (Order No. 2320500) is installed
- Software UPS-CONF (Order No. 2320403) is installed, a free download from the E-shop
- Signal cable for data exchange between UPS and battery unit is installed

Important note!

This information serves to support the user and does not exclude an independent inspection, especially in view of the suitability in individual cases. It is the responsibility of the reader to check the current standards in content and in reference to the validity for the task.

Please follow the safety notes in the packaging inserts of the devices.

Further details about the hardware and software can be found at www.phoenixcontact.net/catalog.

In the "PC Mode" setting on the UPS potentiometer, the UPS functionality follows a chronological sequence that can be parameterized via software, and is thus individually customized to the respective application. Menu: Settings/Time setting

PHOENIX CONTACT Deutschland GmbH
Flachmarktstraße 8
32825 Blomberg, Germany
Phone: + 49 5235 3-12000
Fax: + 49 5235 3-12999
E-mail: info@phoenixcontact.de
www.phoenixcontact.de

