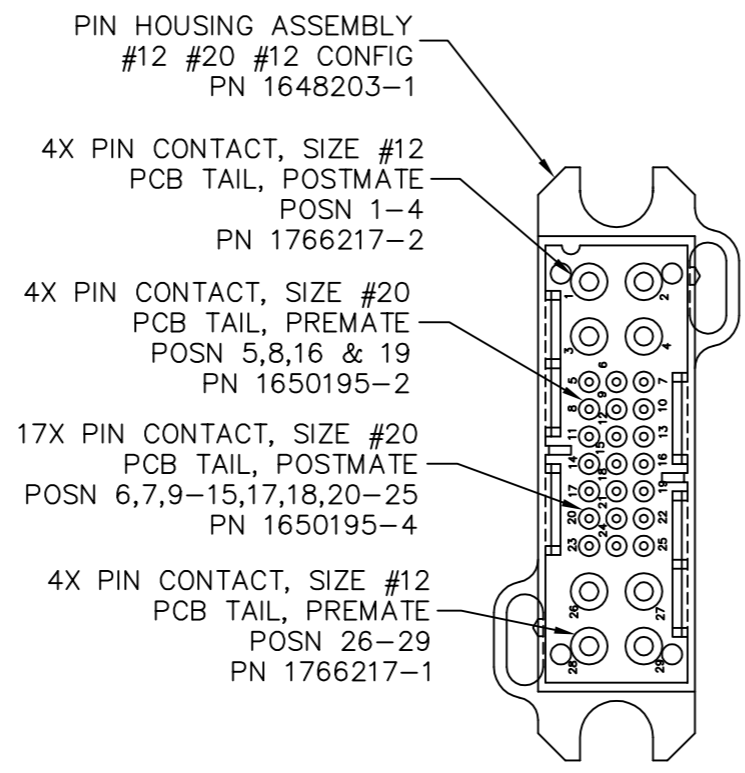
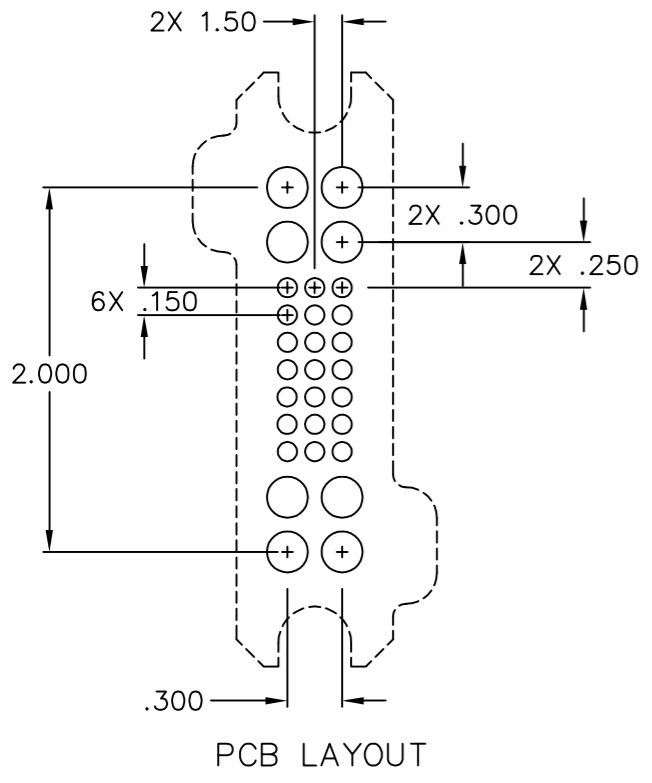
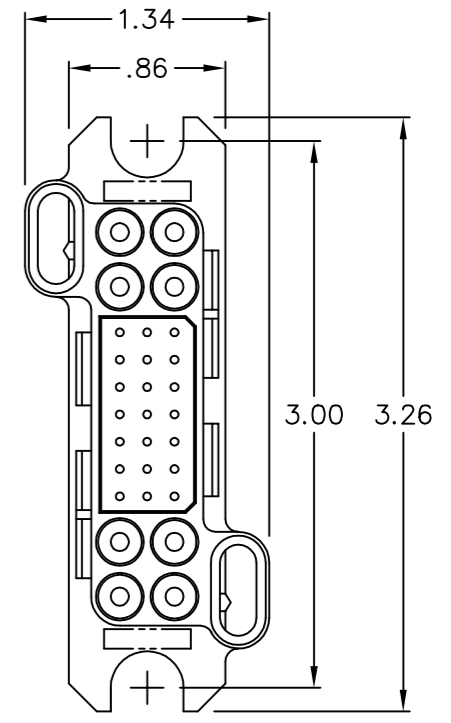
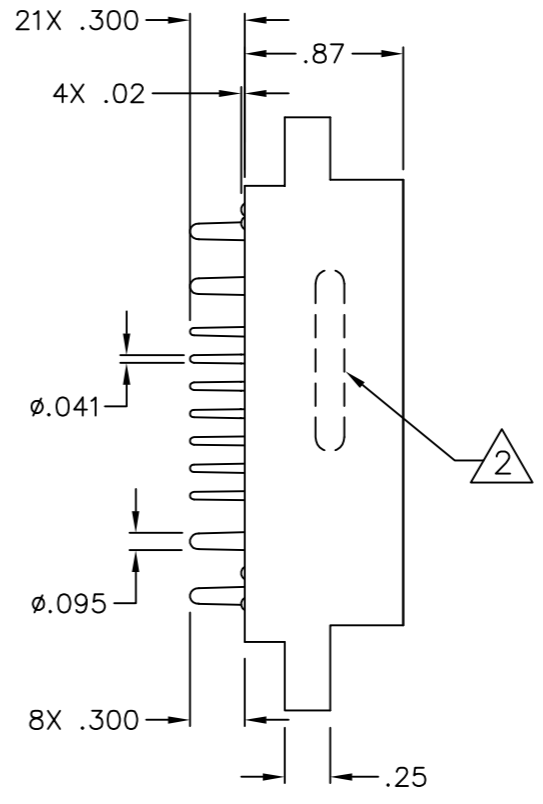


This drawing involves proprietary design rights of Tyco Electronics Corporation, and all design, manufacture, reproduction, use and sale rights regarding the same are expressly reserved. It is submitted for a specific purpose and the recipient by accepting this drawing, assumes custody and control and agrees to take reasonable precautions; (a) that this drawing will not be copied and reproduced, in whole or in part, or its contents revealed in any manner, or to any person except to meet the purpose for which it was delivered and (b) that any special features peculiar to this design will not be incorporated in other projects without the expressed written permission of Tyco Electronics Corporation.

REVISIONS			
EC	REV	DESCRIPTION	DATE
CPR	A	NEW RELEASE	09/24/05

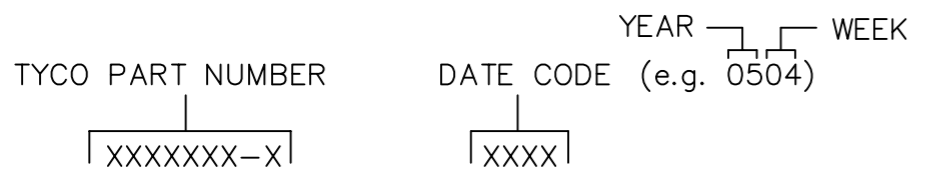


REAR VIEW
(CONTACT INSERTION SIDE)



4. FINISH:
PIN HOUSING: MOLDED, COLOR - BLACK.
SIZE #12 PIN CONTACTS: SILVER PLATED.
SIZE #20 PIN CONTACTS: GOLD PLATED.
3. MATERIAL:
PIN HOUSING: GLASS FILLED THERMOPLASTIC,
HARD DIELECTRIC, U.L. RATED, 94V-0.
RETENTION CLIPS: BERYLLIUM COPPER PER CDA 17200.

△ ITEMS PROVIDED TO THIS SPECIFICATION TO BE PERMANENTLY IDENTIFIED PER THE FOLLOWING IDENTIFIER:



1. PART NUMBER CHANGES AND/OR DESIGN CHANGES AFFECTING ITEM INTERCHANGEABILITY REQUIRE PRIOR TYCO APPROVAL AND AUTHORIZATION BY REVISION TO THIS DRAWING.

NOTES: UNLESS OTHERWISE SPECIFIED

INCH OR INCH (MM) THIRD ANGLE PROJECTION UNLESS OTHERWISE SPECIFIED DIMENSIONS ARE IN INCHES (METRIC) TOLERANCES ANGLES ± .5° DECIMALS .XXX ± .010 (.25) .XX ± .02 (.3)	DRAWN M. ALIM	DATE 09/24/05	tyco Tyco Electronics Corporation Electronics Menlo Park, Ca 94025 ELCON	TITLE CONNECTOR, PIN LOWER DRAWER PN 6643485-1		
	CHECKED	APPROVED D. CHAU		DATE 09/26/05	SIZE B	DWG NUMBER C= 6643485
	APPROVED M. ALIM	DATE 09/26/05	ACAD FILE NUMBER C6643485A.DWG	REV. A	DWG SCALE 1=1 SH 1 OF 1	
	UNLESS OTHERWISE SPECIFIED DIMENSIONS ARE IN INCHES (METRIC)					